

Model : FO.MMDP.SC.50.xxM

Description : OM2 SC to SC Fiber Patchcords, Duplex, Multimode, 50/125µm LSZH

Length xx(M): 1 / 2 / 3 / 5 / 10 / 15 / 20 / 25 / 30 / 40 / 50



This 50/125µm OM2 SC- SC Fiber Optic Patchcord, LSZH, Duplex, Multimode is designed to support high speed transmission on your load area network.

Transmission speed from 1Gbps to 10Gbps which is perfect audio, video and data transmission.

Used with network equipment such as SFP, GBIC transceivers, Media converters, industrial Ethernet devices, and optical fiber NIC's, in gigabit ethernet 1000Base-LX, 1000Base-SX, or 10GBase-SR/LRM.

Save space in high density cabling in data centers, enterprise networks, telecom room, server farms, cloud storage networks, and any places fiber patch cables are needed

High Rated 50/125um Fiber and Cladding, which is Insensitive to bending, easy peeling, easy welding, ensures small optical loss and stable transmission (insertion loss≤0.2dB, return loss ≥30dB.)

Test results for the individual patch cable will be included in each bag.

Model : FO.MMDP.SC.50.xxM

Description : OM2 SC to SC Fiber Patchcords, Duplex, Multimode, 50/125µm LSZH

Length xx(M): 1 / 2 / 3 / 5 / 10 / 15 / 20 / 25 / 30 / 40 / 50



Features:

- LSZH compliant
- Reliable and safe
- High resistance to Micro-bending - 7.5mm Minimum Bend Radius
- High quality Zirconia Ceramic and UPC connector
- High Rated 50/125um Fiber and Cladding
- Supports transfer rates up to 10 Gbps
- High return loss, low insertion loss, low attenuation features ensure signal integrity
- Coded connector assists cable identification during installation, testing and troubleshooting of network equipment

Specifications:

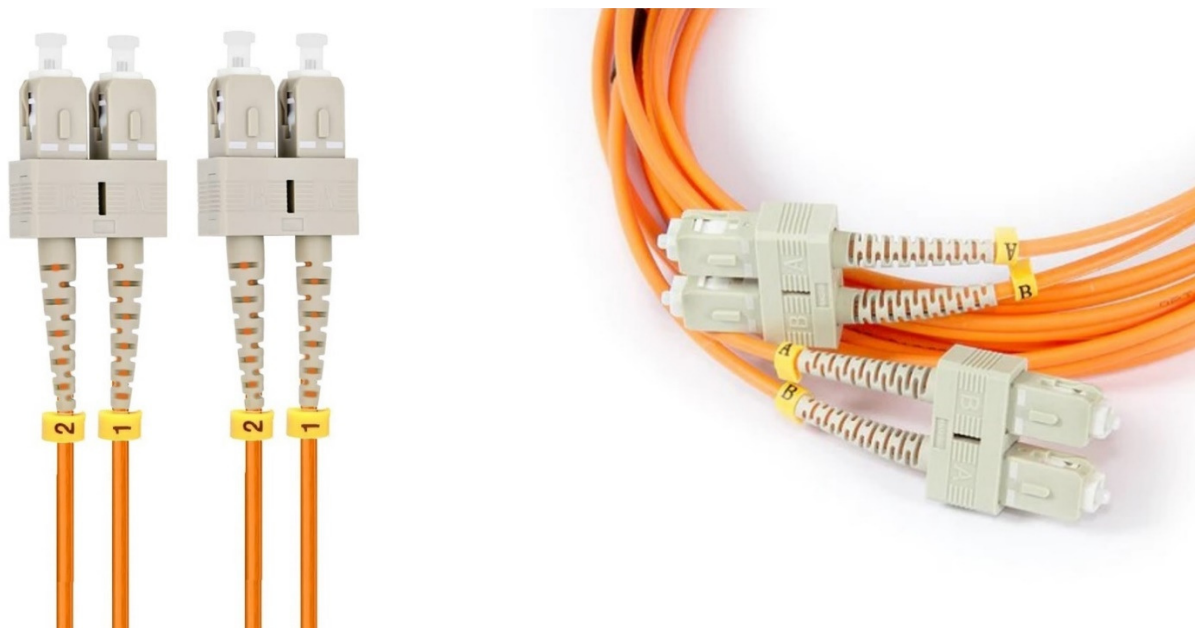
Connector Type	SC connector UPC Molded body with push-pull locking (snap-in)
Fiber Type	Multimode
Core Diameter	OM2 50/125 micron
Transmission Mode	Duplex
Transmission Distance	1Gb Ethernet Distance of 550Meters at 850nm 10Gb Ethernet Distance of 82Meters at 850nm
Transmission Bandwidth	500/500MHz.km @850/1300nm
Insertion loss	typically 0.10 dB (SC)
Return loss	greater than 30dB
Min. Bend Radius (Fiber Core)	7.5mm
Min. Bend Radius (Fiber Cable)	20/10D (Dynamic/Static)
Cable Jacket	PVC
Cable Diameter	2.0mm
Polarity	A (Tx) to B (Rx)
Operating Temperature	-20°C - 70°C

Model : FO.MMDP.SC.50.xxM

Description : OM2 SC to SC Fiber Patchcords, Duplex, Multimode, 50/125µm LSZH

Length xx(M): 1 / 2 / 3 / 5 / 10 / 15 / 20 / 25 / 30 / 40 / 50

Product Picture / Diagram:



Model : FO.MMDP.SC.50.xxM

Description : OM2 SC to SC Fiber Patchcords, Duplex, Multimode, 50/125µm LSZH

Length xx(M): 1 / 2 / 3 / 5 / 10 / 15 / 20 / 25 / 30 / 40 / 50

Application Diagram:



Model : FO.MMDP.SC.50.xxM

Description : OM2 SC to SC Fiber Patchcords, Duplex, Multimode, 50/125µm LSZH

Length xx(M): 1 / 2 / 3 / 5 / 10 / 15 / 20 / 25 / 30 / 40 / 50

Data center Computer room Dedicated



Package Contents :

1 x OM2 SC to SC Fiber Patchcords, Duplex, Multimode, 50/125µm LSZH cable