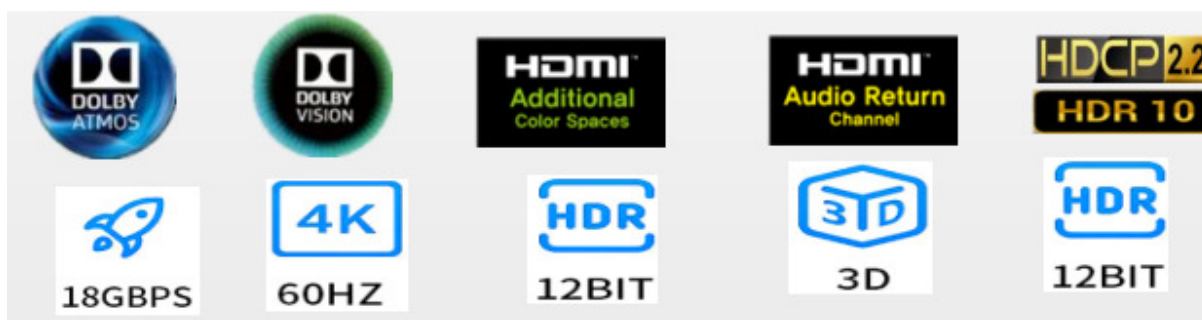


Model : ATZ AOC-HDMI2.0-xxM (xx=Length)

Description: HDMI Active Optical Cable v2.0 - 4K@60hz, 18Gbps 4:4:4
(10m/15m/20m/25m/30m/40m/50m/60m/70m/80m/90m/100m)



Our HDMI Active Hybrid Cable is the most competitive long reach HDMI interconnection solution on the market. It supports HDMI Maximum Data Rate 18Gbps with light weight, flexible and ultra-small long-term bending radius (2cm) hybrid cable. With our advanced optical engine embedded. This HDMI Hybrid Cable provides full HDMI signal integrity, support up to 100m maximum length, plug and play. No external power required.

Model : ATZ AOC-HDMI2.0-xxM (xx=Length)

Description: HDMI Active Optical Cable v2.0 - 4K@60hz, 18Gbps 4:4:4
(10m/15m/20m/25m/30m/40m/50m/60m/70m/80m/90m/100m)

Features:

- Low Power Consumption: 250mW (max). (Power Required)
- Plug and play, no need external power support, no drivers program required Compatible with
- HDMI 2.0 standard.
- Hybrid 4-core optical fiber transmits TMDS signals, 7-core tinned Copper transmits signalling protocol. Anti-electromagnetic interference, No attenuation.
- Support long transmission distance, the longest over 150 meters. (custom length available)
- Imported Photoelectric conversion chip to improve compatibility, stability and service life.
- Support HDCP2.3
- Self-detecting function for EDID information
- No loss of signal – delivering crystal clear digital images instantly
- Supports computer resolutions to 1080P and 4K2K(60P).
- Supports 16bit/24bit (RGB/YCbCr) Deep Color depth, HDR, CEC, 3D and ARC
- Zinc alloy shell Anti-electromagnetic interference increase wear resistance and improve service life.

***Remarks:** This is a uni-directional cable. Please ensure correct connection with connector ends labelled with “→ to source” and “to display→”.

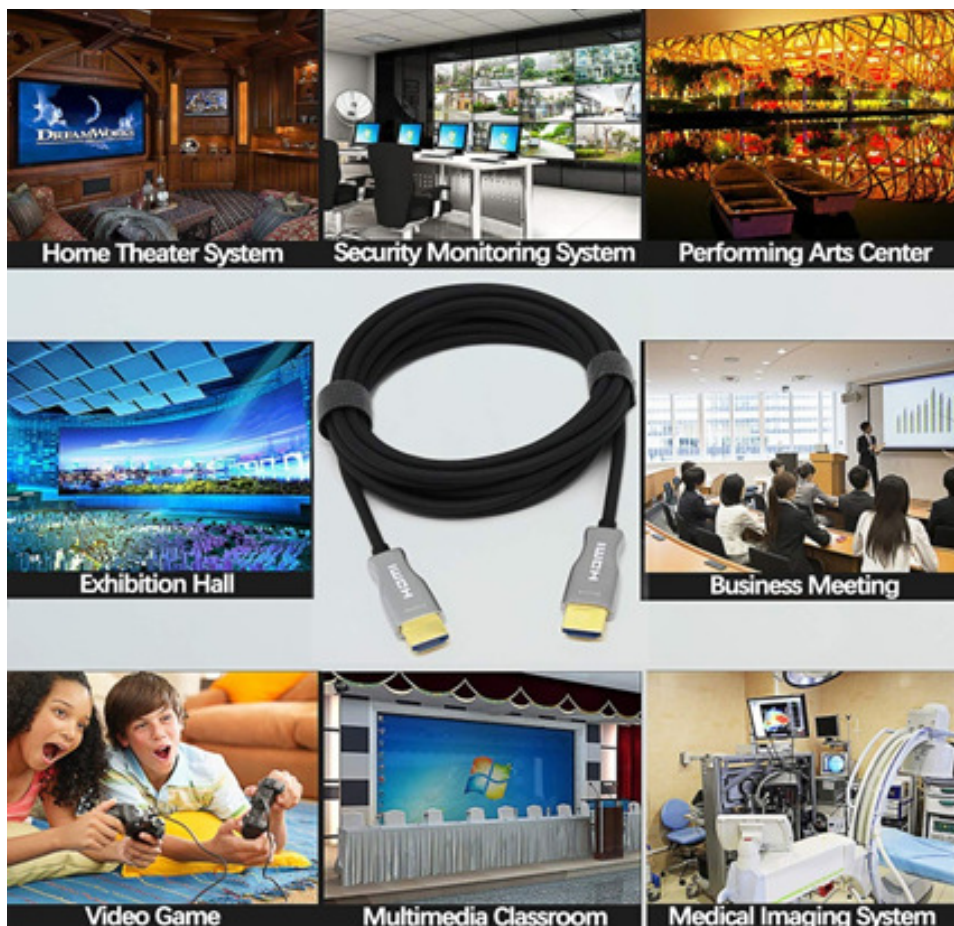
The cable will not be damaged, nor will it cause the connected devices to be damaged, due to wrong connection.

Applications:

- ◆ Digital Signage
- ◆ LED signboards in streets and in stadiums
- ◆ Medical Imaging Equipment
- ◆ Airplane On-board Video System
- ◆ Home Theater
- ◆ Blue-ray, 3D video, Projector, Set-up box, DVR, Game Consoles and Computer
- ◆ TV Broadcast Station
- ◆ Conference Room Video Equipment
- ◆ Security systems

Model : ATZ AOC-HDMI2.0-xxM (xx=Length)

Description: HDMI Active Optical Cable v2.0 - 4K@60hz, 18Gbps 4:4:4
(10m/15m/20m/25m/30m/40m/50m/60m/70m/80m/90m/100m)



Absolute Maximum Rating

| Parameter | Symbol | Min | Max | Unit |
|-----------------------|--------|-----|-----|------|
| Power Supply Voltage | VCC | 4.5 | 5.5 | V |
| Operating Temperature | Top | 0 | 50 | °C |
| Storage Temperature | Ts | -40 | 70 | °C |
| Relative Humidity | Hs | 10 | 80 | %RH |

Recommended Operating Conditions

| Parameter | Symbol | Min | Typical | Max | Unit |
|-----------------------|--------|------|---------|------|------|
| Power Supply Voltage | VCC | 4.75 | 5.0 | 5.25 | V |
| Operating Temperature | Top | 0 | | 50 | °C |

Model : ATZ AOC-HDMI2.0-xxM (xx=Length)

Description: HDMI Active Optical Cable v2.0 - 4K@60hz, 18Gbps 4:4:4
(10m/15m/20m/25m/30m/40m/50m/60m/70m/80m/90m/100m)



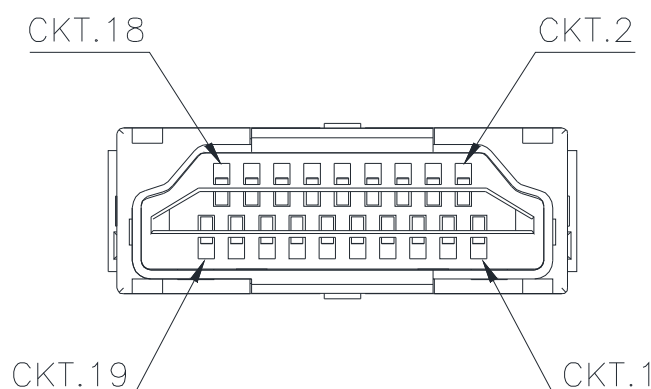
Specifications:

| | |
|---------------------|---|
| Resolution | 4K@60Hz (downward compatible) |
| Bandwidth | 18Gbps |
| Chip | Imported photoelectric conversion chip |
| Color space | 4:4:4 Max |
| Color depth | 12 bit Max |
| Type | Male - Male |
| Core | 4-core fiber + 7-core tinned copper |
| Cable Type | Hybrid type with OM3 fiber and OFC copper wire 24AWG/30AWG (19/0.06TC) |
| Outer diameter | 5.2mm |
| Shell | Zinc alloy |
| Jacket | PVC, RoHS Directive-compliant |
| Power supply | No external power supply required, plug and play |
| Support | HDCP 2.3/HDR10/EDID/CEC/DDC/ARC/3D |
| Power consumption. | 250mW |
| Voltage/Current | 5V/50mA |
| Working temperature | -40°C~70°C |

Model : ATZ AOC-HDMI2.0-xxM (xx=Length)

Description: HDMI Active Optical Cable v2.0 - 4K@60hz, 18Gbps 4:4:4
(10m/15m/20m/25m/30m/40m/50m/60m/70m/80m/90m/100m)

HDMI Type A Pin Assignment



HDMI Type A Connector Pin Assignment

| PIN | Function | PIN | Function |
|-----|------------------------|-----|-------------------|
| 1 | T.M.D.S. Data 2+ | 11 | TMDS Clock Shield |
| 2 | T.M.D.S. Data 2 Shield | 12 | TMDS Clock- |
| 3 | T.M.D.S. Data 2- | 13 | CEC |
| 4 | T.M.D.S. Data 1+ | 14 | Utility |
| 5 | T.M.D.S. Data 1 Shield | 15 | SCL |
| 6 | T.M.D.S. Data 1- | 16 | SDA |
| 7 | T.M.D.S. Data 0+ | 17 | DDC/CEC Ground |
| 8 | T.M.D.S. Data 2 Shield | 18 | +5V Power |
| 9 | T.M.D.S. Data 0- | 19 | Hot Plug Detect |
| 10 | TMDS Clock+ | | |

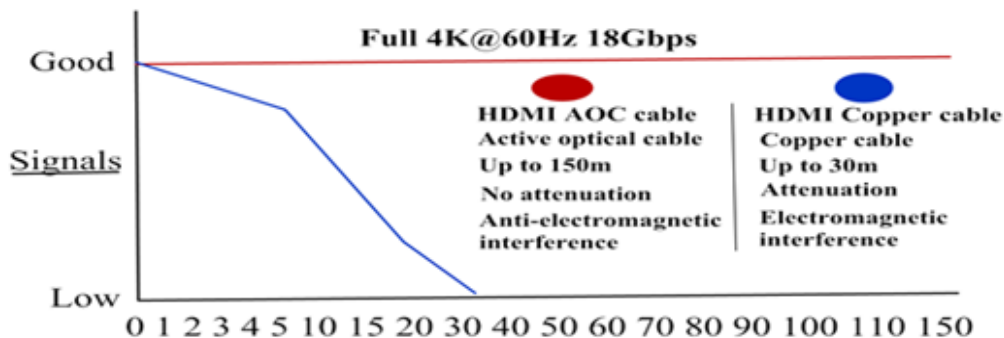
Warranty: 2 Years

Warranty is effective from the date of original delivery.

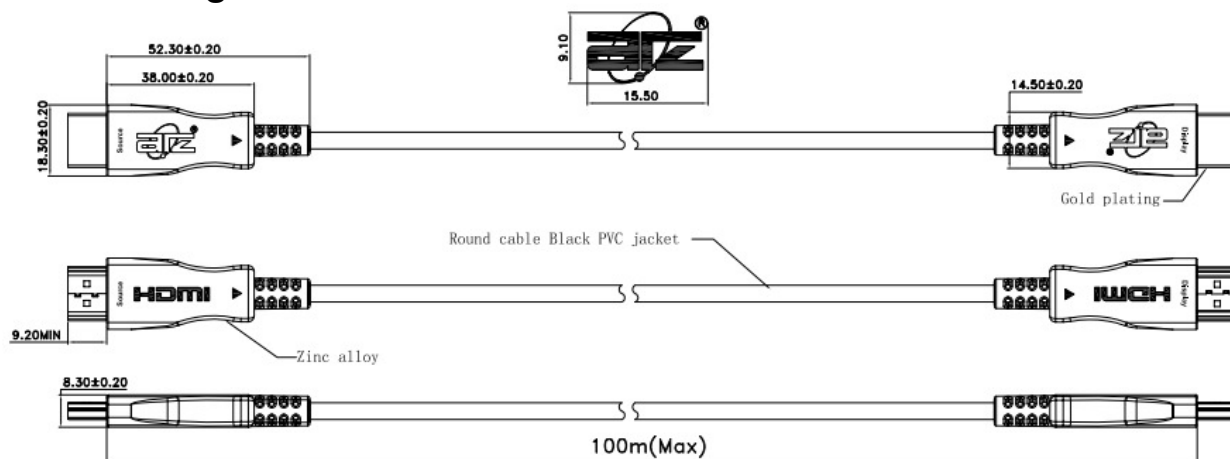
This warranty shall be void if a serial number has been removed from the product.

Model : ATZ AOC-HDMI2.0-xxM (xx=Length)

Description: HDMI Active Optical Cable v2.0 - 4K@60hz, 18Gbps 4:4:4
(10m/15m/20m/25m/30m/40m/50m/60m/70m/80m/90m/100m)



Product Diagram:

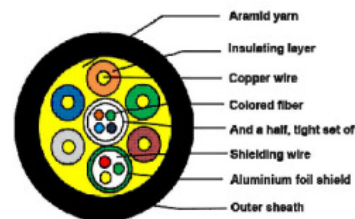


NOTE:

- Supports computer resolutions to 4K@60Hz@4:4:4
- Plug and Play
- Compatible with HDMI 2.0 standard.
- Support HDCP2.2@ARC
- Self-detecting function for EDID information
- No loss of signal
- Hybrid optical cable with fiber and copper wire
- PIN gold plated, shell gold plated
- Environmental Specifications: For Indoor use only;
- Operating temperature: -40°C to 70°C
- Minimum bending radius 20mm
- Max. tension force: 100N
- Powered via HDMI devices
- 4core OM3 Multimode Fiber (high speed data) and 7core copper cable
- Round cable Black PVC jacket
- RoHS 2.0 & REACH compliant
- Packing: package 1pc reel

Model No.

ATZ FO-HDMI-CABLE-V2.0-10M
ATZ FO-HDMI-CABLE-V2.0-15M
ATZ FO-HDMI-CABLE-V2.0-20M
ATZ FO-HDMI-CABLE-V2.0-30M
ATZ FO-HDMI-CABLE-V2.0-40M
ATZ FO-HDMI-CABLE-V2.0-50M
ATZ FO-HDMI-CABLE-V2.0-60M
ATZ FO-HDMI-CABLE-V2.0-70M
ATZ FO-HDMI-CABLE-V2.0-80M
ATZ FO-HDMI-CABLE-V2.0-90M
ATZ FO-HDMI-CABLE-V2.0-100M



ATZ

| UNLESS OTHERWISE SPECIFIED TOLERANCE | | | | Drawing Number | Date | Name | HDMI 2.0 AM-AM(AOC) | | | |
|--------------------------------------|-------|------|-------|----------------|------|------------|---------------------|-----|------------|-----|
| ANG | TOL | DIM | TOL | Drawer | CLH | 2020.11.16 | Model | | | |
| .X | ±3.0° | .X | ±0.10 | Auditor | | | Unit | mm | Proportion | 1:1 |
| .XX | ±2.0° | .XX | ±0.05 | Authorizer | | | Page | 1/1 | Page | 1 |
| .XXX | ±1.0° | .XXX | ±0.03 | | | | Versions | | | 1 |