

Model : ATZ FO-MC-GE-MMDP0.55K-SC

Description: 10/100/1000M Gigabit Ethernet Media Converter Dual fiber 850nm Multitmode 550M/SC



This ATZ FO-MC-GE-MMDP0.55K-SC 10/100/1000M Ethernet media converter adopts switching technology to fulfil media conversion. It complies with IEEE802.3z and IEEE802.3ab standards, and supports two types of media network connections: 10/100/1000Base-T and 1000Base-SX/LX. It inter-converts electrical signals of 10/100/1000Base-T twisted pairs with optical signals of 1000Base-SX. It extends the network transmission distance to 550m via multi-mode fiber cable OM1 / OM2.

Features:

- Supporting inter-conversion between 10/100/1000Base-TX and 1000Base-SX
- Supporting full-duplex and half-duplex and its auto-sensed.
- Supporting automatic cross connection of twisted pair interfaces, facilitating system commissioning and installation.
- Supporting the transmission of extra-long VLAN packets.
- Supporting Quality of Service (QoS) and ensuring the transmission of VoIP packets.

pg. 1

Notes: - All brand names and trademarks are properties of their respective holders and are referred to here for descriptive purpose only. Photo attached is for reference only, it may be slightly varied in items of colour, shape from the actual item delivered from time to time.

All specifications are subject to change without prior notice.
© Copyright ATZ

Model : ATZ FO-MC-GE-MMDP0.55K-SC

Description: 10/100/1000M Gigabit Ethernet Media Converter Dual fiber 850nm Multimode 550M/SC

- Supporting LFP (Select by DIP Switch freely).
- Supporting the transmission of extra-long packets up to 1600 bytes in the "store-and-forward" mode and up to 9000bytes jumbo frames in the "Cut-through" mode (Select by DIP Switch freely)

Specifications:

Parameter	Specifications
Access mode	10/100/1000Mbps Gigabit Ethernet
Standard	IEEE802.3ab 1000Base-T , IEEE802.3z 1000Base-SX/LX Gigabit Ethernet, IEEE802.1q VLAN, IEEE802.1p QoS, IEEE802.1d Spanning Tree
Wavelength	850nm/ VCSEL
Optical Power	-9dBm to -3dBm
Transmission distance	850nm@550m CAT5/CAT5E twisted pair: 100m
Port	One RJ45 connector: connected to STP/UTP CAT5/CAT5E twisted pair One optical port: MM: SC/ST/FC (fiber size: 50,62.5/125μm)
MAC Address table	2K
Buffer space	1M
Conversion means	Media conversion
Delay	Store-and-forward: <10μs; cut-through: 1μs
BER	<10 ⁻⁹
MTBF	100,000 hours
LED	PWR (power supply), FX LINK (optical link action), TP LINK1000 (twisted pair link1000M), TP LINK100 (twisted pair link 100M), TP ACT (twisted pair packet forwarding)
Power	DC5V 2A (external), AC220 0.5A/DC-48 (built-in)
Power consumption	Full load <3W
Operating temperature	-10~55°C
Operating humidity	5%~90%
Maintaining temperature	-40~70°C
Maintaining humidity	5% ~ 90% non-condensing
Dimensions	26mm (H) x 70mm (W) x 94 mm (D) (external power supply)
	30mm (H) x 110mm (W) x 140 mm (D) (internal power supply)

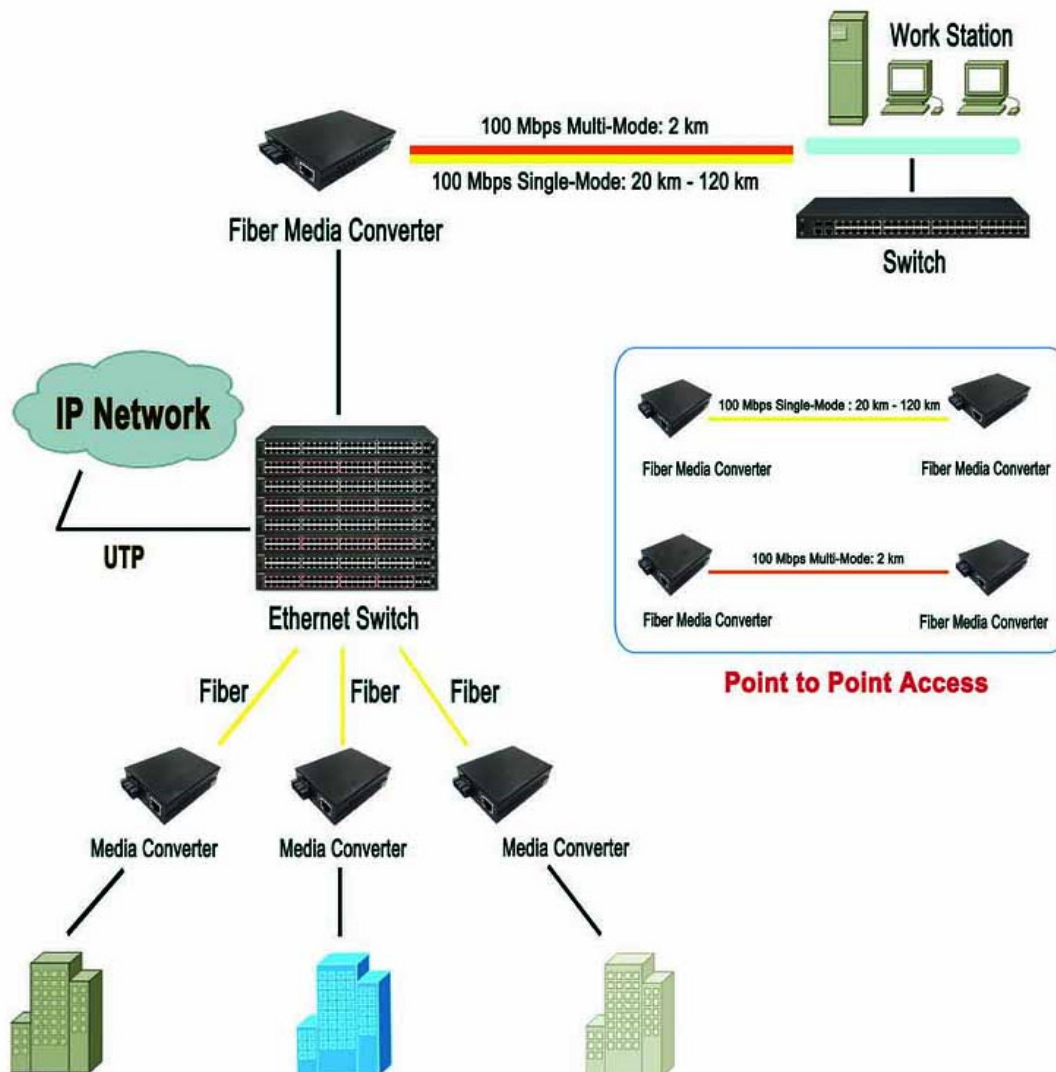
Model : ATZ FO-MC-GE-MMDP0.55K-SC

Description: 10/100/1000M Gigabit Ethernet Media Converter Dual fiber 850nm Multitmode 550M/SC

Package Includes:

- 1x Multimode Media converter
- 1x power adapter

Product Diagram:



Warranty: 3 Years

Warranty is effective from the date of original delivery.

This warranty shall be void if a serial number has been removed from the product.