

**Stockcode** : ATZ EQ-HDMI-CABLE-V2.0-xxM

**Description:** HDMI TO HDMI CABLE Ver 2.0 W/GOLD PLATED CONN  
Length: 20M/25M/30M (Active with Equalizer)



**Stockcode** : ATZ EQ-HDMI-CABLE-V2.0-xxM

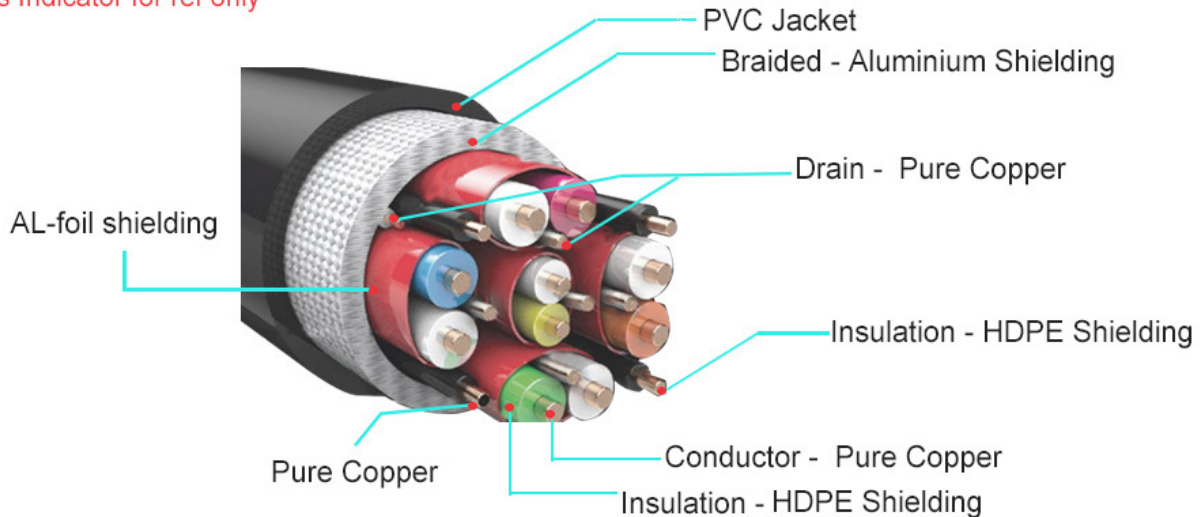
**Description:** HDMI TO HDMI CABLE Ver 2.0 W/GOLD PLATED CONN

Length: 20M/25M/30M (Active with Equalizer)

# ALL COPPER CORE

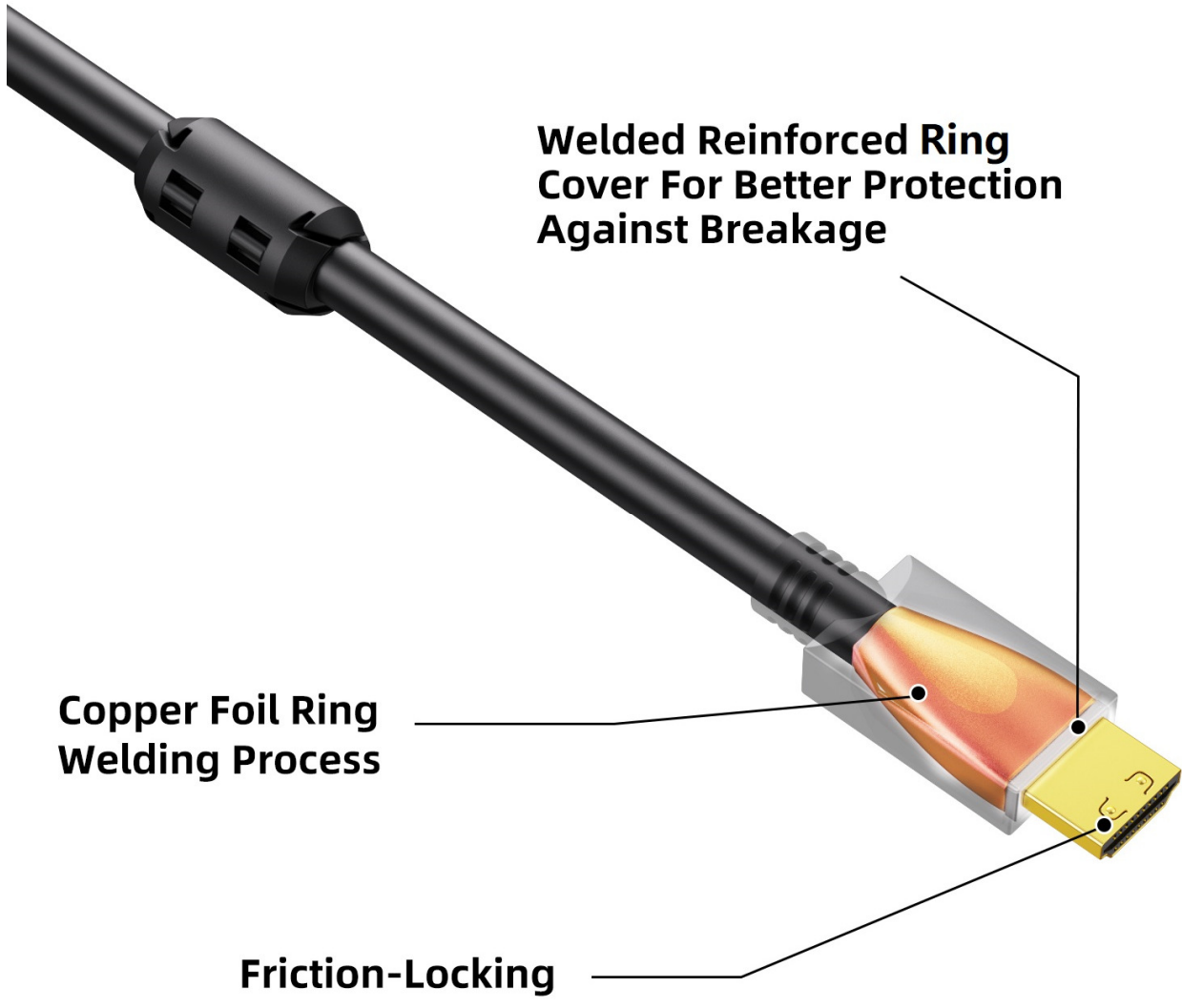


Colors Indicator for ref only



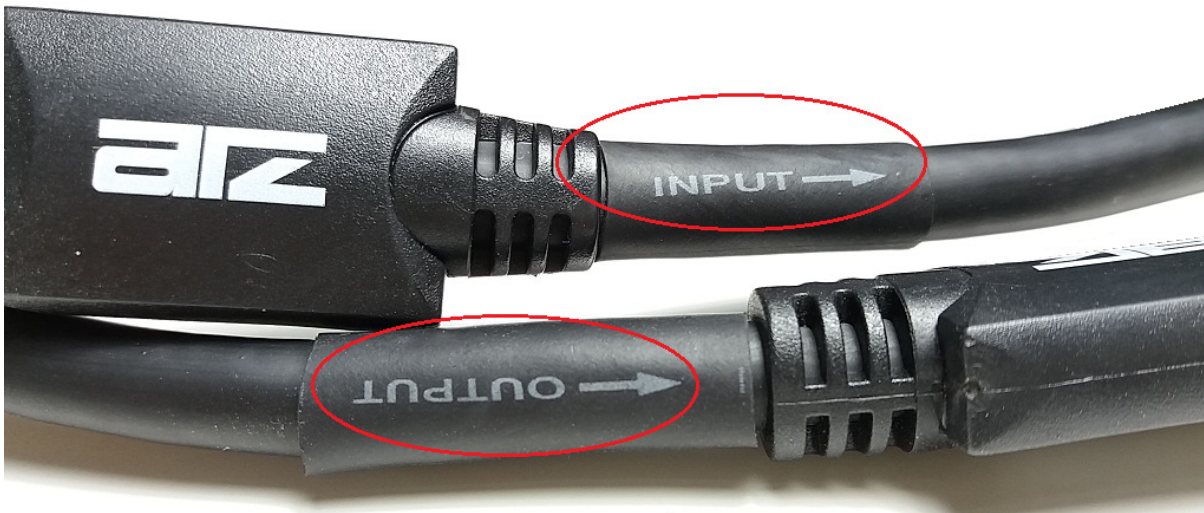
**Stockcode** : ATZ EQ-HDMI-CABLE-V2.0-xxM

**Description:** HDMI TO HDMI CABLE Ver 2.0 W/GOLD PLATED CONN  
Length: 20M/25M/30M (Active with Equalizer)



**Stockcode** : ATZ EQ-HDMI-CABLE-V2.0-xxM

**Description:** HDMI TO HDMI CABLE Ver 2.0 W/GOLD PLATED CONN  
Length: 20M/25M/30M (Active with Equalizer)



**Uni-Directional. Please ensure correct connection**

Suitable for HDTV, home theater, DVD player, projector, PS3, XBOX 360 and other HDMI devices.

#### **FEATURES:**

- 4K Ultra HD @50/60Hz - i.e. 2160p@50Hz and 2160p@60Hz - four times the clarity of 1080p@60Hz
- Transfer speed: 18Gbps
- 3D support for immersive movies and gaming
- Support for Deep Color and the latest color spaces such as BT.2020
- Ethernet connectivity, allowing connected devices to share an Internet connection.
- Up to 32bit uncompressed digital audio channels
- Up to 1536kHz audio sampling
- Simultaneous delivery of dual video streams to multiple users (on the same screen)
- Simultaneous delivery of multi-stream audio to multiple users (up to four)
- Support HDR (High Dynamic range)
- Support ARC
- Support CEC extensions provide more expanded command and control of consumer electronics devices through a single control point
- High density triple shielding for maximum rejection of EMI and RFI
- Connectors: 24K gold-plated to ensure superior signal transfer and lifetime of maximum performance.



**Stockcode** : ATZ EQ-HDMI-CABLE-V2.0-xxM

**Description:** HDMI TO HDMI CABLE Ver 2.0 W/GOLD PLATED CONN  
Length: 20M/25M/30M (Active with Equalizer)

- **Built-in Equalizer (Booster)**  
The built-in equalizer on this cable is used to regenerate and re-establish proper timings of the TMDS and DDC signals. This helps boost the HDMI signal allowing it to be reliably transferred over longer distances. No external power is required for the equalizer-it is driven by the internal 5VDC signal carried over the HDMI cable.
- **Shielding at Connector:** Copper Foil wrapped 360° around Connector housing and Soldered 360° - provides efficient shielding from electromagnetic interference (EMI, RFI)
- **Welded Reinforced Ring Cover:** for stronger protection against breakage at connection point after prolonged stress bearing of cable weight.
- **Friction-Locking:** connectors constructed with raised tabs to ensure tighter fit
- **Ferrite core:** This cable uses ferrite cores which are small magnetic blocks wrapped around the end of the cable to suppress EMI/RFI electronic noise on the cable by absorbing the unwanted high frequencies and dissipating them as very low-level heat.

\* **Remarks:** This is a uni-directional cable. Please ensure correct connection with connector ends labelled with "Input →" to source and "Output →" to display.  
The cable will not be damaged, nor will it cause the connected devices to be damaged, due to wrong connection.

## SPECIFICATIONS:

Conductors	High purity Oxygen Free Bare Copper
Insulation	foamed PE insulation, ensure image quality and transmit image signal with stability.
Inner shield	100% Aluminum/Mylar foil shield, prevent high frequency noises and interference
Outer shield	95% AL+MG braid shield, prevents most low frequency noises and interference.
Contacts	24K Gold Plated
Connectors	Zn or Al alloy Metal shell type (constructed with raised tabs for tighter fit)
Available gauge	26AWG OD:8.0mm
Certification	RoHS, UL, CE
Shielding	AL+ Mg+ Braiding+ Ferrite(for option)

**Stockcode :** ATZ EQ-HDMI-CABLE-V2.0-xxM

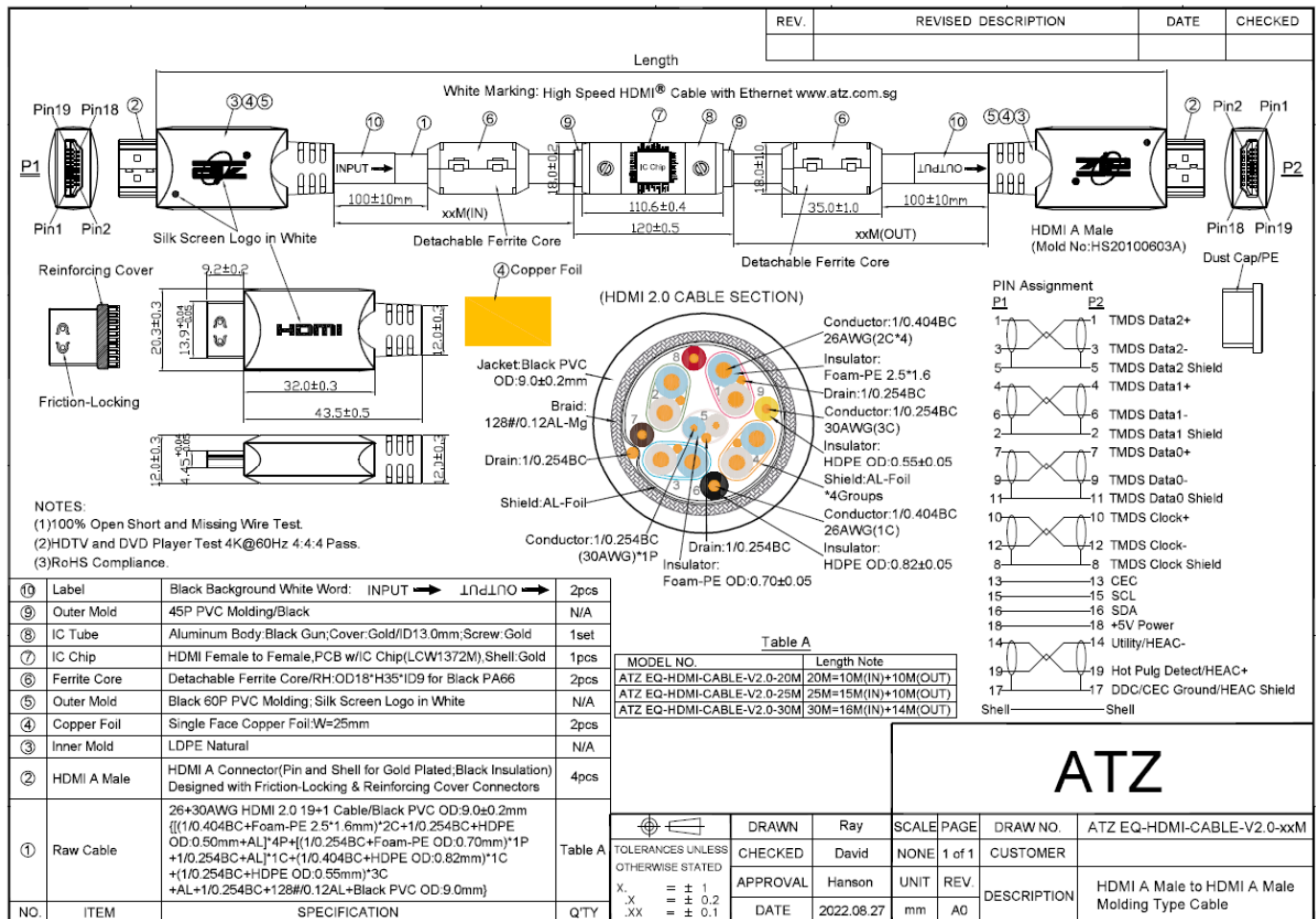
**Description:** HDMI TO HDMI CABLE Ver 2.0 W/GOLD PLATED CONN

Length: 20M/25M/30M (Active with Equalizer)

## ELECTRICAL:

Quality Control	operation according to regulations & rules in ISO9001:2008
Voltage	DC300V 5M ohm/10ms
Insulation Resistance	10M min
Contact Resistance	5 ohm max
Working Temperature	-25°C - 80°C
Data transfer rate	18Gbps Max.
Differential Impedance	100±10Ω(TDR)

## Product Diagram:





**Stockcode** : ATZ EQ-HDMI-CABLE-V2.0-xxM

**Description:** HDMI TO HDMI CABLE Ver 2.0 W/GOLD PLATED CONN  
Length: 20M/25M/30M (Active with Equalizer)

---

---

### **Package Contents:**

1x HDMI v2.0 Premium High Quality Cable w/Booster

---

### **Warranty: 3 Years**

Warranty is effective from the date of original delivery.

This warranty shall be void if a serial number has been removed from the product.