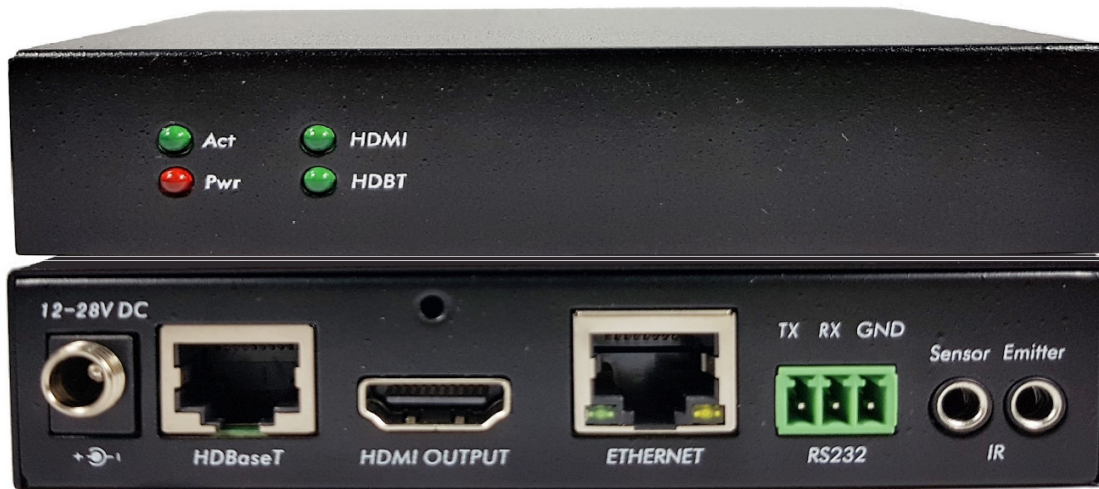


Model : ATZ HDBT-E100-RB

Description : HDBaseT Receiver Box for HDMI w/IR+PoL (100m)



The ATZ HDBT-E100-RB is part of ATZ's expanding HDBaseT Cat Extender. Single side connections for HDMI, Control, and Power provide a cleaner wiring and rack mounting solution. The design allows the system to be powered via a DC adapter from either side. With a single CAT 5e/6/7 cable, the ATZ HDBT-E100-RB can go up to 100m, 1080p @60Hz 48bit color depth and also support 4K, bi-directional IR, RS232, Ethernet and PoL.

Features:

- Transmit HDMI (4K@30Hz 24bit 70m over one Cat 5e/6/7 cable)
- Support HDMI 4Kx2K and 3D;
- HDCP Compliant;
- All connectors on one side for easier installation;
- Bi-directional RS-232,IR, Ethernet;
- Power both units from TX or RX side with wall power supply (PoL);
- Status LED for all connections on front.

Model : ATZ HDBT-E100-RB

Description : HDBaseT Receiver Box for HDMI w/IR+PoL (100m)

Specifications:

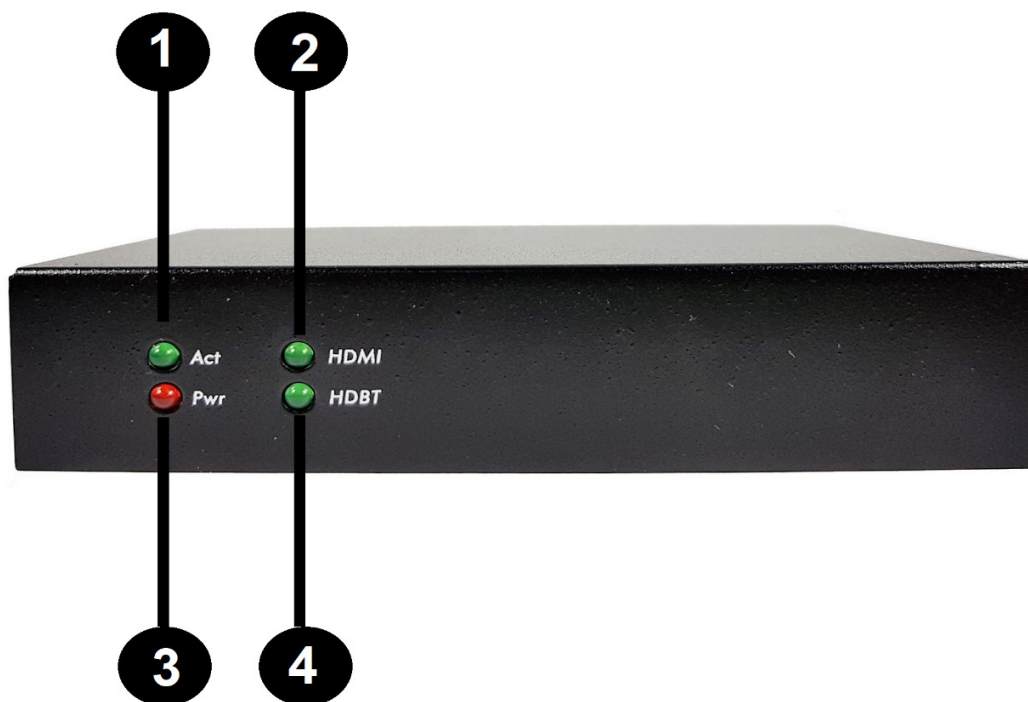
Video	
HDMI Compliance	HDMI 3D, 4K
HDCP Compliant	Yes
Distance	100m on 1080p@60Hz 70m on 4K@30Hz
Max Resolution	4Kx2K@30Hz 24bit
Connectors	
TX Connectors	(1) HDMI, (2)Rj45(HDBT/ETHERNET),(2)IR,(1)RS232
RX Connectors	(1) HDMI, (2)Rj45(HDBT/ETHERNET),(2)IR,(1)RS232
Mechanical	
Dimensions	111 x 75 x 25 mm(L/W/H)
Net Weight	1.06lbs[480g]
Package Size	255 x 140 x 90 mm(L/W/H)
Gross Weight	1.676lbs[760g]
Power	
Power Supply	24V 1A DC
Environmental	
Operation Temperature	32~131°F [0~55°C]
Storage Temperature	-4~185°F [-20~85°C]
Relative Humidity	5~95% RH [no condensation]

Model : ATZ HDBT-E100-RB

Description : HDBaseT Receiver Box for HDMI w/IR+PoL (100m)

Receiver Box:

Front Panel

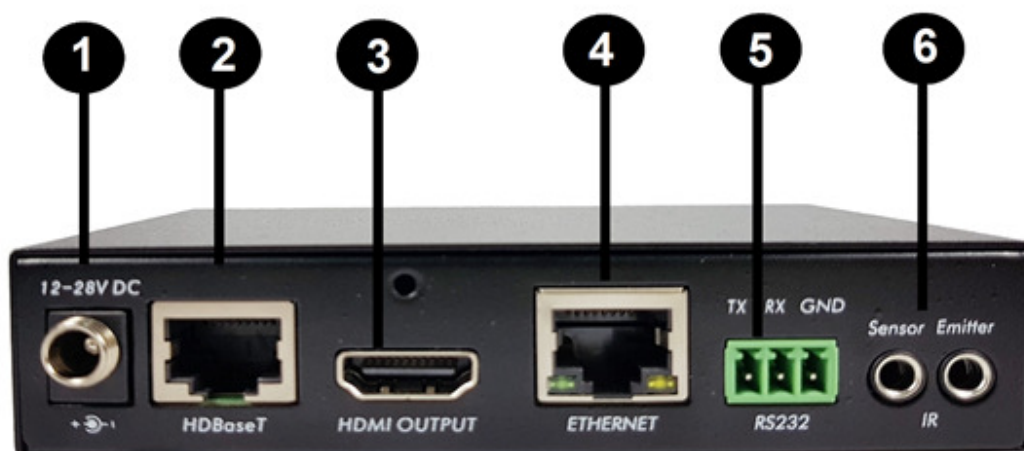


- 1. Act:** Flashing when work normally;
- 2. HDMI:** Lighting solid when with HDCP, flashing when without HDCP;
- 3. Pwr:** Lighting solid when power up;
- 4. HDBT:** Lighting solid when video active, flashing when HDBT connect without video signal.

Model : ATZ HDBT-E100-RB

Description : HDBaseT Receiver Box for HDMI w/IR+PoL (100m)

Rear panel



- 1. Power:** Connect to DC adapter here to power up device;
- 2. HDBaseT:** Connect HDBaseT source here;
- 3. HDMI Output:** Connect to display;
- 4. ETHERNET:** LAN pass-through; Or Web UI access
- 5. RS232:** Connect to a display for control;
- 6. IR:** Connect to IR emitter and sensor.

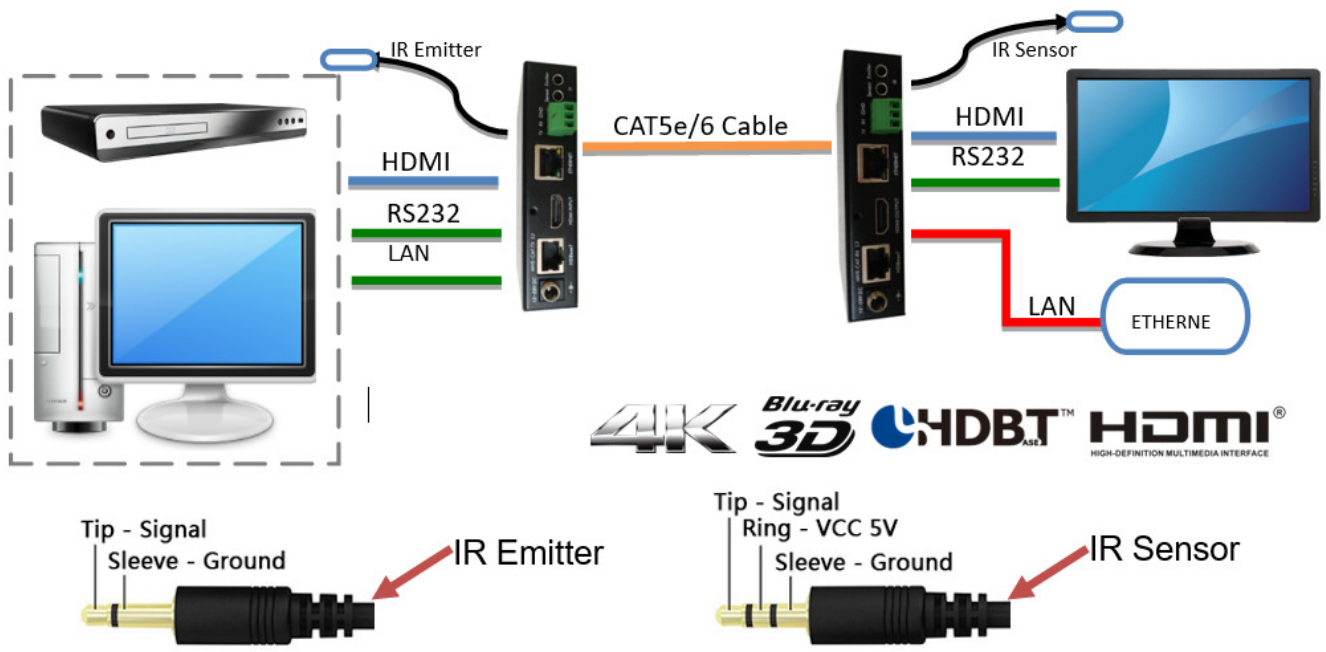
Package Includes:

- 1× ATZ HDBT-E100-RB (Receiver Box)
- 1× 24V 1A DC power adapter
- 1× User manual

Model : ATZ HDBT-E100-RB

Description : HDBaseT Receiver Box for HDMI w/IR+PoL (100m)

Product Diagram:



Warranty: 2 Years

Warranty time is from the date of original delivery.

This warranty shall be void if a serial number has been removed from the product.

Model : ATZ HDBT-E100-RB

Description : HDBaseT Receiver Box for HDMI w/IR+PoL (100m)

Safety Information:



To reduce the risk of electric shock, do not expose this product to rain or moisture



Do not modify the wall plug. Doing so will void the warranty and safety features



If the wall plug does not fit into your local power socket, hire an electrician to replace your obsolete socket.



This equipment should be installed near the socket outlet and the device should be easily accessible in the case it requires disconnection