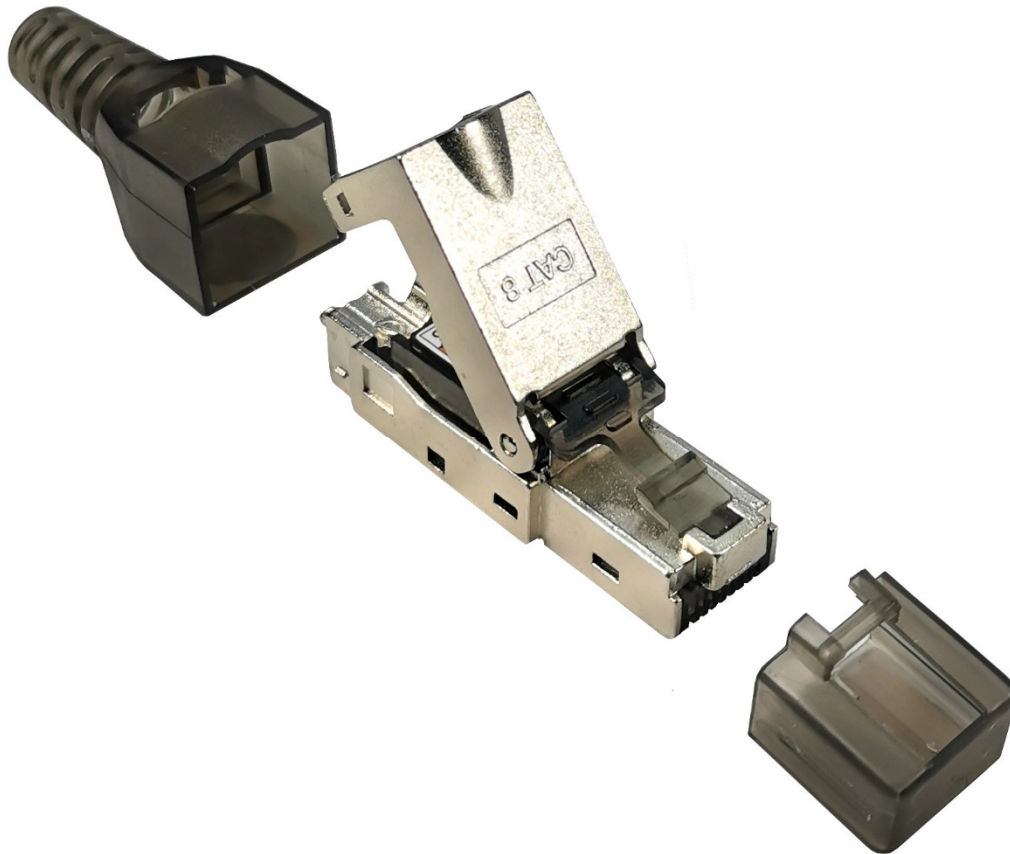


Model : ATZ NET-RJP-C8-TL

Description: Cat.8 RJ45 Shielded connector plug tool-less



RJ-45 TOOL-LESS modular plug is 8-position 8-conductor (8P8C) and designed for all computer networking. Modular plug will be backward compatible against Cat 6, Cat 6A and Cat 7 connector. RJ-45 TOOL-LESS modular plugs are versatile for many networking applications.

The unique toolless design does not require the use of a crimping tool and simplifies placement and termination of bulky shielded cable. Plug designed to make cable patching easy, thus saving time and effort. Simply insert the leads following the colour coding, and press down the lid. 568A and 568B colour wiring diagram is integrated on the lid for easy installation.

The modular plugs are manufactured from high-impact clear poly-carbonate to withstand everyday wear and tear. Terminate with a Cat 8 Ethernet cable support up to 40GB data transfer rate.

Model : ATZ NET-RJP-C8-TL

Description: Cat.8 RJ45 Shielded connector plug tool-less

Features:

- High performance plug for CAT8 patching to 40 Gigabit Ethernet
- Complies with the CAT8 channel level
- Full shielded with zinc alloy housing
- Fits Cable wire gauge: 22AWG to 26AWG
- Tool-less termination saves time and money
- Easy, quickly, reliable and comfortable installation
- Complies with EIA/TIA-568-B.2-2002, ISO/IEC11801-2002
- Meets CAT8 performance requirements per ANSI/TIA-568-C.2-1
- 50μ" Gold plated contacts
- Strain relief boots are included

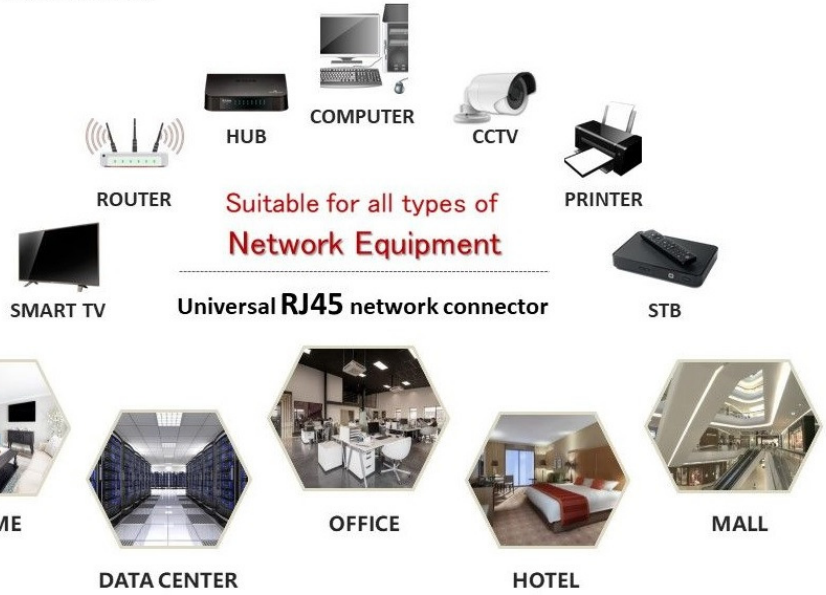
Specifications:

- Cable-to-plug tensile Strength: 7.7 kg
- Diameter of insert hole: **1.5mm**
- Durability: 750 Mating Cycles
- Operation Temperature Range: -10°C~+60°C
- Housing: Polycarbonate, UL94V-2
- Cover Material: Zinc die-cast Nickel plated
- Contact Material: Phosphor Bronze Nickel plated
- Gold Plating: 50μ"

Model : ATZ NET-RJP-C8-TL

Description: Cat.8 RJ45 Shielded connector plug tool-less

► **APPLICATION**



Product Diagram:

Model : ATZ NET-RJP-C8-TL

Description: Cat.8 RJ45 Shielded connector plug tool-less

