

**Model** : ATZ HDBT-E100B-RB-AEL

**Description:** HDBaseT Receiver box 4K60 4:4:4 with audio de-embedder, HDMI loopout, POC, EDID (100m)



**Model** : ATZ HDBT-E100B-RB-AEL

**Description:** HDBaseT Receiver box 4K60 4:4:4 with audio de-embedder, HDMI loopout, POC, EDID (100m)

ATZ HDBT-E70B-RB-AEL is a HDBaseT technology Receiver Box. It supports no compression, no losses, no latency HDMI signal transmission. It will work well with other HDBaseT equipment. All the signals are transmitted by one single CAT5E/6/7 cable. For 1080P it support transmission distance of 320ft (100m), or 4K60Hz at 220ft (70m). Compatible with all the HDTV resolutions, HDMI2.0 protocol. It also support bi-directional RS232 and IR transmission and realize the long distance control. Supports power over cable(POC), users only need to power one side; Supports 3.5mm Audio embedded and de-embedded function, for managing internal or external audio input and output. It supports EDID management, providing user flexibility to work with different displays. Support 1x HDMI loop-out for TX and 2x HDMI sync output for RX. So it can be efficiently deployed for use in media-conferencing room, school, government, cinema and other applications.

## Features:

- Works with HDBaseT Transmitters to form an Extender Kit
- Support up to 320ft (70m) at 1080p, and up to 220ft (70m) at 4K60 over single Cat5E/6//7 cable.
- Highest resolutions supported at 4k60 4:4:4
- Equipped with EDID management capability
- Bidirectional IR/Serial control signal transmission
- Power over Cable (POC) locally powered over Cat5e/6 cable at either end
- Supports 7.1 DTS Master HD, Dolby True HD, Audio embedded and de-embedded
- Support 1 HDMI loop out (TX) and 2x HDMI sync output (RX)

## Specifications:

Model	ATZ HDBT-E100B-TB-AEL	ATZ HDBT-E100B-RB-AEL
<b>Input</b>	2x HDMI, 1x 3.5MM audio, 1x RS232, 1x IR_TX, 1x IR_RX	1x HDBaseT
<b>Output</b>	1x HDBaseT	2x HDMI, 1x 3.5MM audio, 1x RS232, 1x IR_TX, 1x IR_RX
<b>Protocol</b>	Support HDMI2.0 and HDCP; Support EDID management	

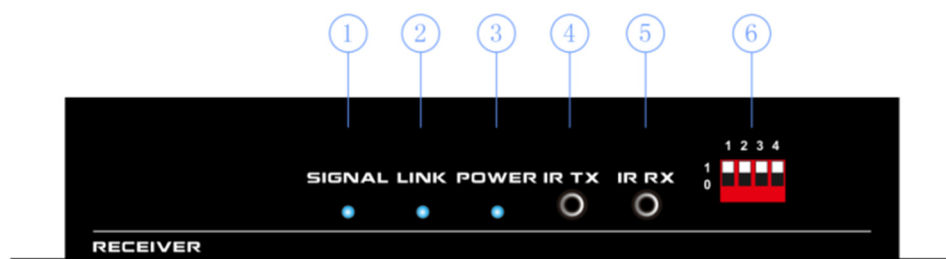
**Model** : ATZ HDBT-E100B-RB-AEL

**Description:** HDBaseT Receiver box 4K60 4:4:4 with audio de-embedder, HDMI loopout, POC, EDID (100m)

<b>Resolution</b>	480i,576i,480p,576p,720p,1080i,1920x1080p60Hz, 3840x2160/30Hz,3840X2160/60 4096X2160/24Hz
<b>Colour space</b>	1080p: 36Bit Deep Color 4K60: 24Bit True Color, 4:4:4
<b>Data rate</b>	18Gbps
<b>Transmit distance</b>	CAT6: 1080p60Hz transmit 100m; 4K60Hz transmit 70m
<b>Measure</b>	152×100×27 (mm)
<b>Weight</b>	200g (excluding package and power adapter)
<b>Power supply</b>	AC: 100-240V 50/60Hz 1.5A Max DC: 12V 1500mA
<b>Power consumption</b>	≤11W
<b>Working humidity</b>	10%-90%
<b>Working humidity</b>	0°C-50°C

## Panel & indicators

Receiver front panel:

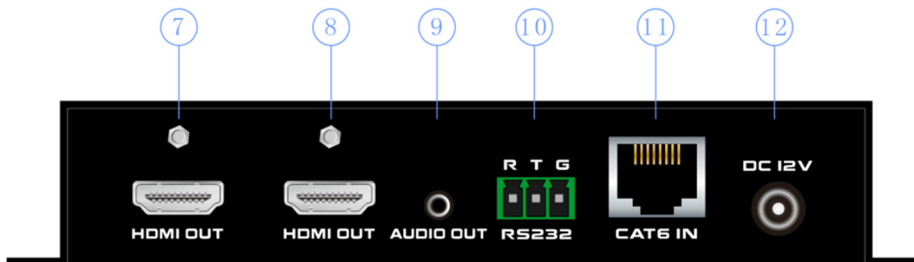


- ① System Indicator
- ② Connection Indicator
- ③ Power Indicator
- ④ IR transmitter port
- ⑤ IR receiver port
- ⑥ EDID DIP Switch

**Model** : ATZ HDBT-E100B-RB-AEL

**Description:** HDBaseT Receiver box 4K60 4:4:4 with audio de-embedder, HDMI loopout, POC, EDID (100m)

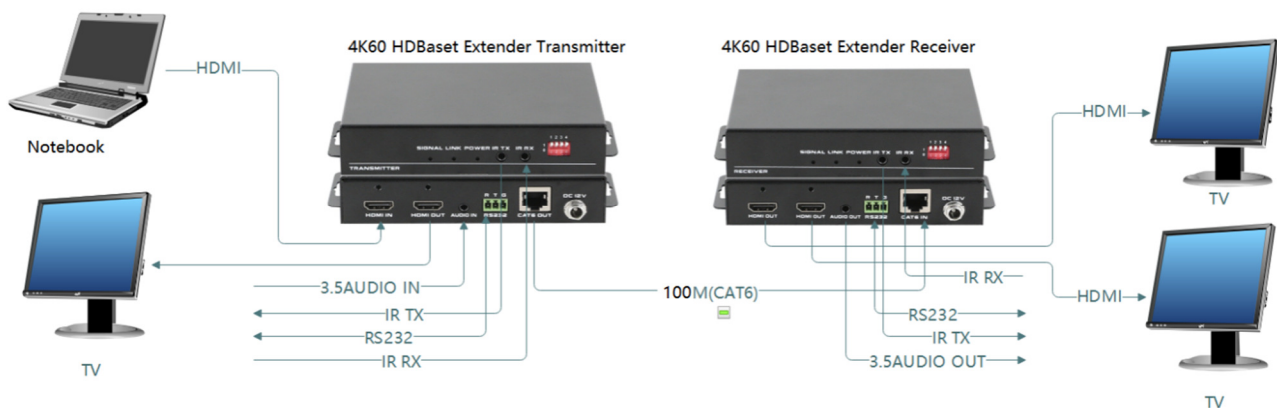
### Receiver back panel:



- ⑦ HDMI Output port
- ⑧ HDMI loop output
- ⑨ Audio output
- ⑩ 3-pin RS232 port
- ⑪ RJ45 Input port
- ⑫ DC12V input port

### Operation:

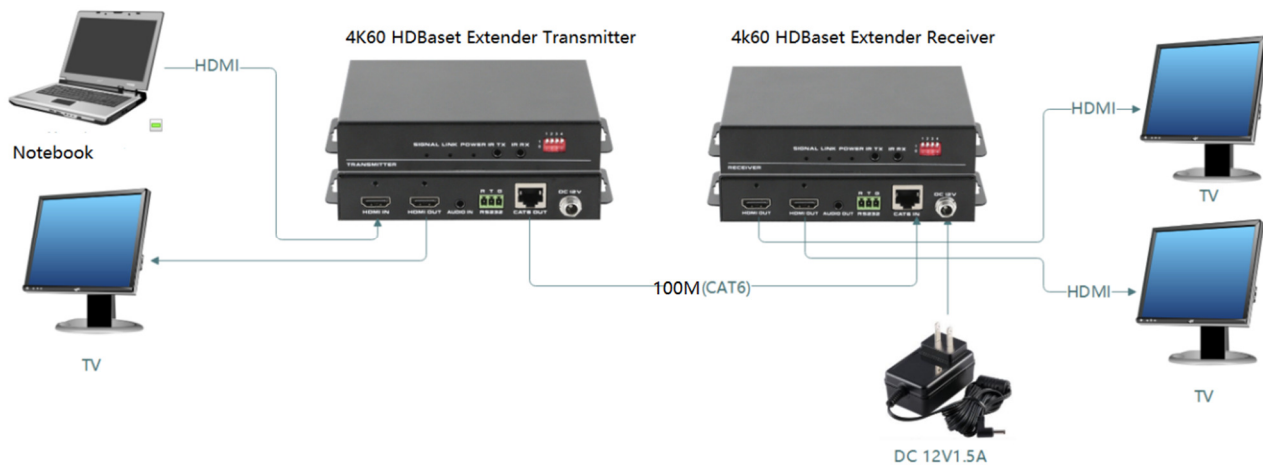
### Connection Diagram



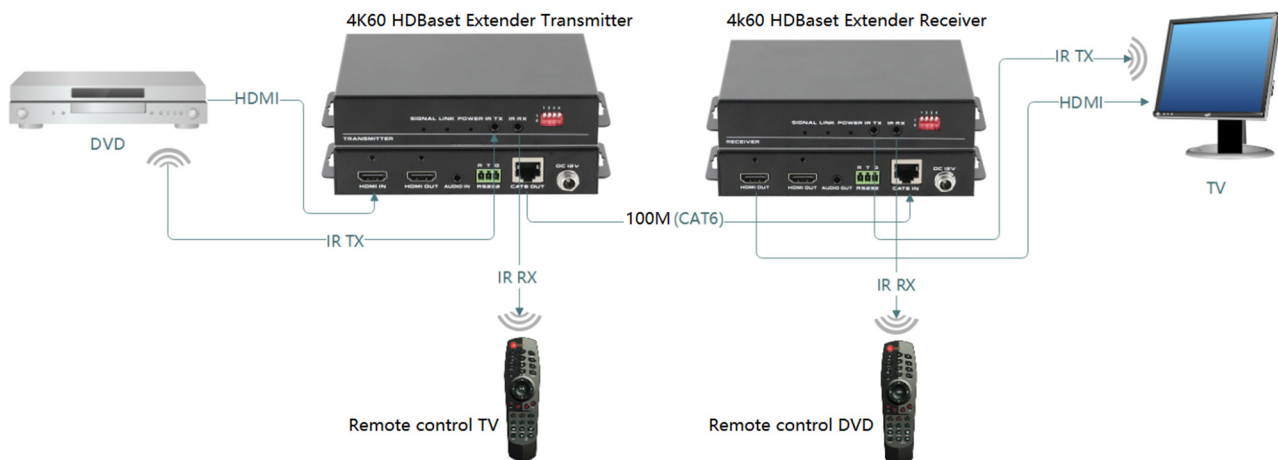
**Model** : ATZ HDBT-E100B-RB-AEL

**Description:** HDBaseT Receiver box 4K60 4:4:4 with audio de-embedder, HDMI loopout, POC, EDID (100m)

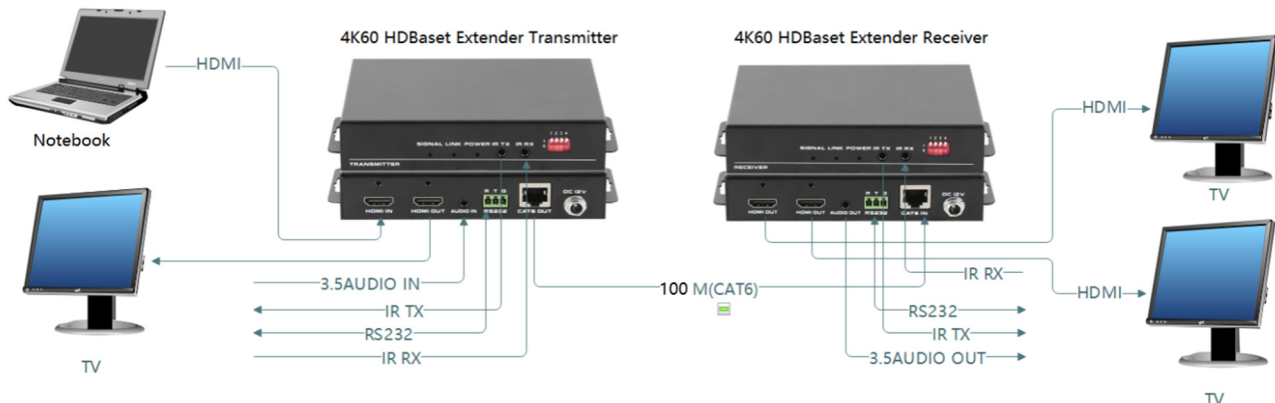
**POC(Power over cable), only need to power on one end:**



**Bi-directional IR signal transmission:**




**RS232 signal transmission:**



**Model** : ATZ HDBT-E100B-RB-AEL

**Description:** HDBaseT Receiver box 4K60 4:4:4 with audio de-embedder, HDMI loopout, POC, EDID (100m)

## EDID management (Only need apply at Transmitter Box)

EDID Management				Audio		Eg: ① If want to embed the external audio into the image, you need to set D4 switch to 1
D1	D2	D3		D4		
1	1	1	4K60	1	3.5MM	
1	0	0	1080P60hz	0	HDMI	
1	0	1	HDMI-1200			
0	1	1	1280x800			
0	0	1	DVI-1080			
0	1	0	DVI-1200			
1	1	0	4k2.1			
0	0	0	Internal EDID			

**Note:** If want to use the internal EDID, please Insert the display HDMI cable into the input terminal IN to learn the EDID, then set dip to 000, wait for 2 seconds and then connect normally

## RJ-45 cable using requests

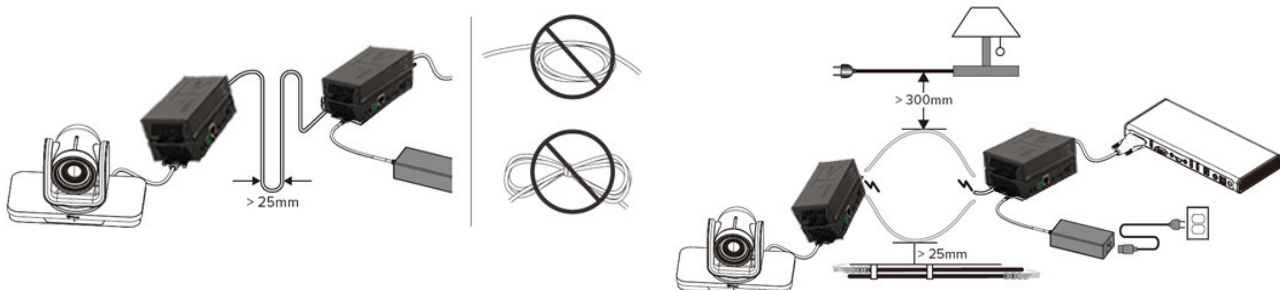
Cable sequence and recommended cable with 24 AWG metal conductor, shielded, minimum bandwidth is 400MHz, and shielded crystal heads at both ends.



↑  
Insert Twisted  
Pair Wires  
RJ-45  
Connector

TIA/EIA-T568B	
Pin	Wire Color
1	White-orange
2	Orange
3	White-green
4	Blue
5	White-blue
6	Green
7	White-brown
8	Brown

## Wiring Requirements:



**Model** : ATZ HDBT-E100B-RB-AEL

**Description:** HDBaseT Receiver box 4K60 4:4:4 with audio de-embedder, HDMI loopout, POC, EDID (100m)

---

---

### Package Includes:

1x HDBT Receiver Box

1x Power adapter (DC12V)

1x IR cable

---

### Warranty: 2 Years

Warranty is effective from the date of original delivery.

This warranty shall be void if a serial number has been removed from the product.



The terms HDMI and HDMI High-Definition Multimedia interface, and the HDMI logo are trademarks or registered trademarks of HDMI Licensing LLC in the United States and other countries