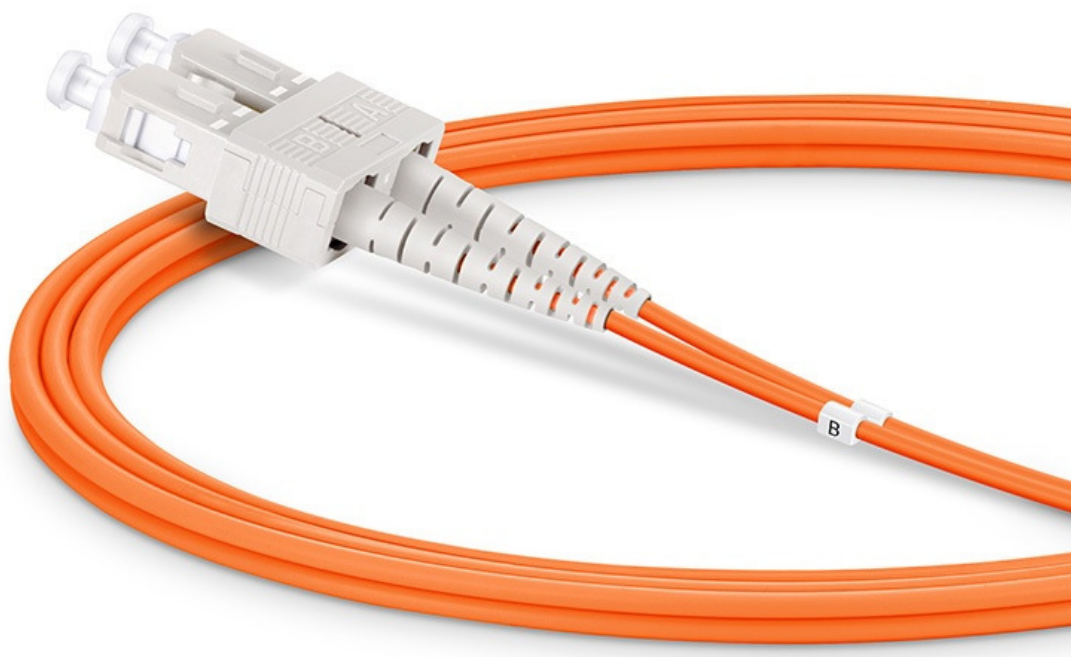


Model : FO.MMDP.SC.625.xxM

Description : OM1 SC to SC Fiber Patchcords, Duplex, Multimode, 62.5/125µm LSZH

Length xx(M): 1 / 2 / 3 / 5 / 10 / 15 / 20 / 25 / 30 / 40 / 50



This 62.5/125µm OM1 SC- SC Fiber Optic Patchcord, LSZH, Duplex, Multimode is designed to support high speed transmission on your load area network.

Transmission speed from 1Gbs to 10Gbs which is perfect audio, video and data transmission.

Used with network equipment such as SFP, GBIC transceivers, Media converters, industrial Ethernet devices, and optical fiber NIC's, in gigabit ethernet 1000Base-LX, 1000Base-SX, or 10GBase-SR/LRM.

Save space in high density cabling in data centers, enterprise networks, telecom room, server farms, cloud storage networks, and any places fiber patch cables are needed

High Rated 62.5/125µm Fiber and Cladding, which is Insensitive to bending, easy peeling, easy welding, ensures small optical loss and stable transmission (insertion loss \leq 0.2dB, return loss \geq 30dB.)

Test results for the individual patch cable will be included in each bag.

Model : FO.MMDP.SC.625.xxM

Description : OM1 SC to SC Fiber Patchcords, Duplex, Multimode, 62.5/125µm LSZH

Length xx(M): 1 / 2 / 3 / 5 / 10 / 15 / 20 / 25 / 30 / 40 / 50



Features:

- LSZH compliant
- Reliable and safe
- High resistance to Micro-bending - 7.5mm Minimum Bend Radius
- High quality Zirconia Ceramic and UPC connector
- High Rated 62.5/125µm Fiber and Cladding
- Supports transfer rates up to 10 Gbps
- High return loss, low insertion loss, low attenuation features ensure signal integrity
- Coded connector assists cable identification during installation, testing and troubleshooting of network equipment

Specifications:

Connector Type	SC connector UPC Molded body with push-pull locking (snap-in)
Fiber Type	Multimode
Core Diameter	OM1 62.5/125µm micron
Transmission Mode	Duplex
Transmission Distance	1Gb Ethernet Distance of 300m at 850 nm / 600m at 1310 nm 10G Ethernet Distance of 300m 33m at 850 nm / 300m at 1310 nm
Transmission Bandwidth	160/500MHz-km @850nm, 200/500MHz-km @1300nm
Insertion loss	typically 0.10 dB (SC)
Return loss	greater than 20dB
Min. Bend Radius (Fiber Core)	7.5mm
Min. Bend Radius (Fiber Cable)	20/10D (Dynamic/Static)
Cable Jacket	PVC
Cable Diameter	2.0mm
Polarity	A (Tx) to B (Rx)
Operating Temperature	-20°C - 70°C

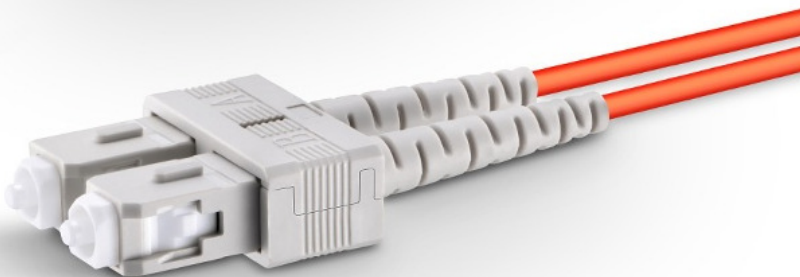
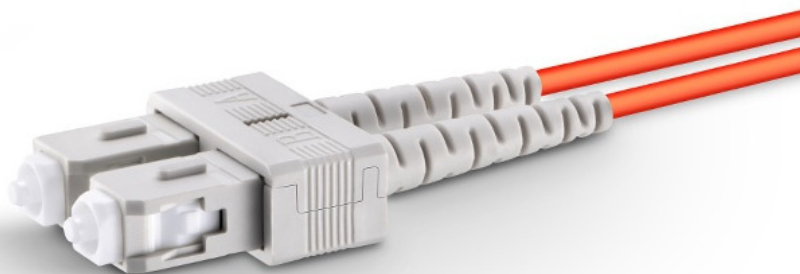
Model : FO.MMDP.SC.625.xxM

Description : OM1 SC to SC Fiber Patchcords, Duplex, Multimode, 62.5/125µm LSZH

Length xx(M): 1 / 2 / 3 / 5 / 10 / 15 / 20 / 25 / 30 / 40 / 50



Product Picture / Diagram:



Model : FO.MMDP.SC.625.xxM

Description : OM1 SC to SC Fiber Patchcords, Duplex, Multimode, 62.5/125µm LSZH

Length xx(M): 1 / 2 / 3 / 5 / 10 / 15 / 20 / 25 / 30 / 40 / 50

Application Diagram:



Model : FO.MMDP.SC.625.xxM

Description : OM1 SC to SC Fiber Patchcords, Duplex, Multimode, 62.5/125µm LSZH

Length xx(M): 1 / 2 / 3 / 5 / 10 / 15 / 20 / 25 / 30 / 40 / 50

Data center Computer room Dedicated



Package Contents :

1 x OM1 SC to SC Fiber Patchcords, Duplex, Multimode, 62.5/125µm LSZH cable