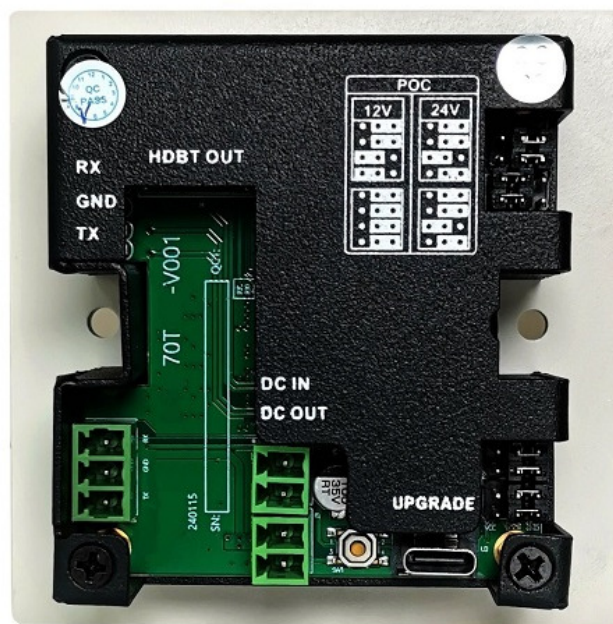
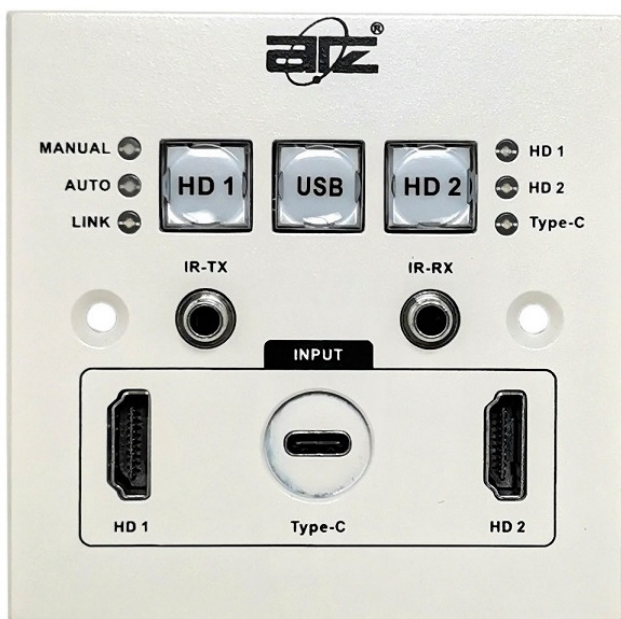


Model : ATZ HDBT-E70-TW-H2UC

Description: HDBaseT™ Sender Wall Plate 2xHDMI+USB-C inputs+IR 4K60 4:2:0 (70m)



This is a newly developed HDBaseT wallplate transmitter. It supports 2x HDMI and 1x USB Type-C input sources, and the input resolution can support up to 4K60Hz 420 Or 4K30 444, the length of the network cable for transmitting 4K resolution can reach 35 meters, supports POC and EDID management. It supports the adjustment of POC power supply line sequence, adapts to third-party HDBaseT devices, It can control the device by sending instructions through the serial port of the remote network receiver, and can control the near-end device through the serial port of the panel itself.

It is widely used in video conferencing, large-screen display and multimedia display control systems, high-quality image display projects, medical image display and projection systems; suitable for long-distance video and information transmission systems such as airports, train stations, sports centers etc.

Features:

- Supports 2x HDMI and 1x USB Type-C inputs
- Supports HDCP1.4
- Transmission distance support 70/100m at 1080P60, or 35/70m at 4K30 via Cat5e/Cat6
- Supports inputs sources auto or manual switching
- Supports the Switch 3* programming control commands by buttons
- Supports PC software control
- Supports POC(power over Cable)
- Supports EDID management
- Support bi-directional IR transmission

Model : ATZ HDBT-E70-TW-H2UC

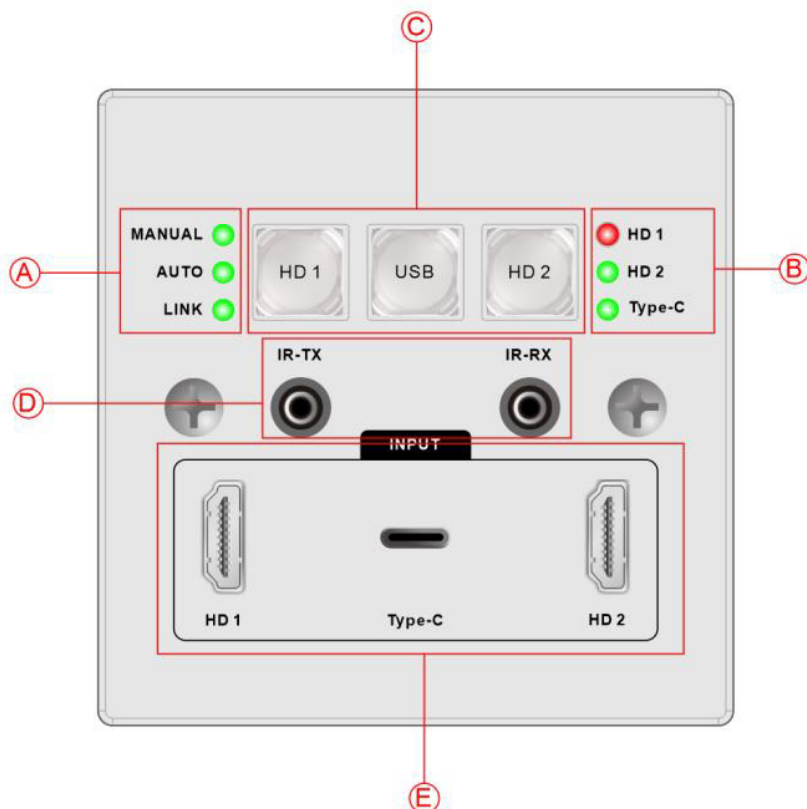
Description: HDBaseT™ Sender Wall Plate 2xHDMI+USB-C inputs+IR 4K60 4:2:0 (70m)

Specifications:

Input	2x HDMI, 1x USB Type-C, 3x Switching button 1x IR
Output	1x HDBaseT (RJ 45) 1x IR
Protocol	HDMI2.0
Control	Switch Button, Auto detection/switch, PC software, RS232
Resolution	4096*2160P60 4:2:0, 4096*2160P30 4:4:4, 3840*2160P30 4:4:4, 1920*1200P60
Transmitter distance	70m: 1080p@60 35m: 4K60Hz 4:2:0 / 4K30 4:4:4
Power supply	DC 12V 1.5A
Dimension (WxHxD)	86x86x38mm
Weight	0.245kg
Power consumption	9.5W
Operating temperature	-10 ~ 40°C
Storage temperature	-25°C ~ 55°C

Panel Introduction:

Front View:



Model : ATZ HDBT-E70-TW-H2UC

Description: HDBaseT™ Sender Wall Plate 2xHDMI+USB-C inputs+IR 4K60
4:2:0 (70m)



A	Status Indicator	MANUAL: Manual light is on means under the manual mode AUTO: Auto light is on means under the auto switching mode LINK: Connection indicator No network cable plugged in: LINK light is off Connection failed: LINK light is red Connection successful: LINK lights is green
B	Signal Indicator	When the input sources are available the corresponding indicator lights are green
C	Key Switch	HD1 button: short press to switch to HDMI1 channel USB button: short press to switch to TYP-C channel HD2 button: short press to switch to HDMI2 channel
D	Two-way infrared	IR-TX infrared transmission, IR-RX infrared receiver
E	Input interface	2x HDMI, 1x USB TYPE-C

Function keys:

EDID setting: Press and hold HD AND USB button for 1~10 seconds to cycle switch EDIDs.

The HD1 light turns on for 2 seconds, indicating Bypass

The HD1 and USB lights are on for 2 seconds at the same time, which is 4K30 EDID

HD1, USB and HD2 lights are on for 2 seconds at the same time, which is 1080P60 EDID

Automatic and manual switching: Press and hold the HD1 and USB buttons 1~10 seconds to switch between automatic and manual modes.

External control: Press and hold HD1、USB and HD2 buttons for 1-10 seconds to send the corresponding Ctrl1, Ctrl2 and Ctrl3 commands.

Manual mode: In manual mode, you need to press the button manually to switch.

Automatic mode: There are two states in automatic mode: one is the last-inserted-first-out state, and the other is to automatically jump to the input with signal when there is no signal.

Last In, first Out: The signal inserted later will be the first out signal in automatic mode.

For example: When HD1 input is in progress, inserting HD2 input will automatically switch to HD2 signal

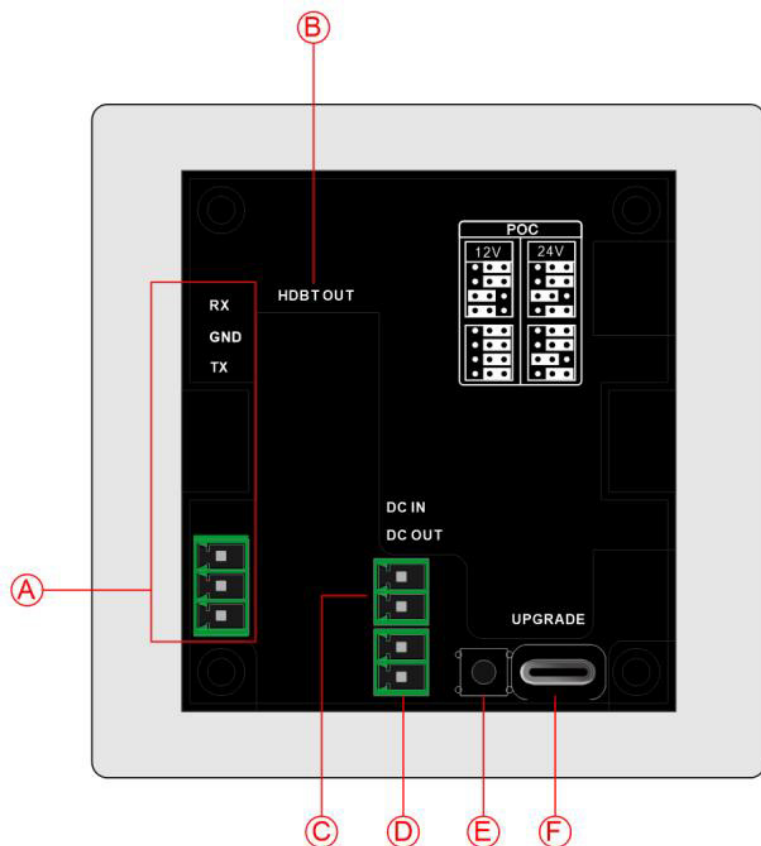
No signal state: When the input signal manually switched to is turned off, it will automatically switch to the input channel with signal.

For example: When the HD1 signal is being output, there is a signal input to HD2, If the HD1 signal source is disconnected, it will automatically jump to the HD2 signal.

Model : ATZ HDBT-E70-TW-H2UC

Description: HDBaseT™ Sender Wall Plate 2xHDMI+USB-C inputs+IR 4K60 4:2:0 (70m)

Back view



A	External Control	Multi-function button output interface, bidirectional RS232
B	HDBT OUT	HDBaseT interface, to connect HDBaset receiver
C	Power port IN	DC 12V1.5A power input
D	Power port OUT	Provide 12V output, power cannot exceed 5W
E	Reset button	No effect
F	Control port	USB Type-C interface, connect to the computer to log in to the client

Software Control:

Operation instructions:

Physical connection: There is a Type-C port on the back panel of the transmitter. Use a USB to Type-C cable to connect to the computer.

After the physical connection is completed, use the iWP-Control-V5.11 PC software to connect to the device. Open the software as shown below, select the COM port number in the lower right corner, and click Connect to connect. If the connection is successful, it will be displayed in green.

Model : ATZ HDBT-E70-TW-H2UC

Description: HDBaseT™ Sender Wall Plate 2xHDMI+USB-C inputs+IR 4K60 4:2:0 (70m)



Switch interface:

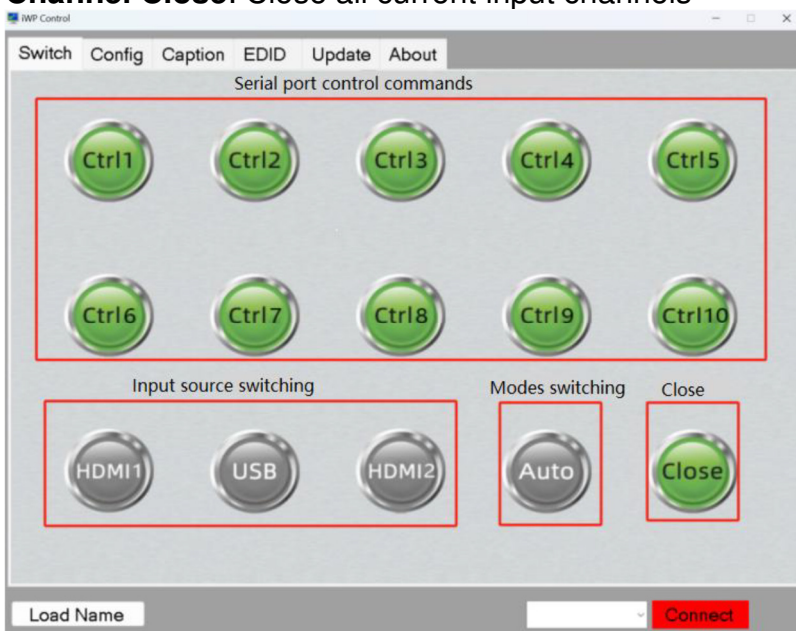
The switching interface is divided into four areas: command sending, signal switching, mode switching, and channel cancellation.

Command sending: 10 different commands can be entered in the panel, corresponding to Ctrl1 to Ctrl10

Signal switching: HD1, USB, HD2 correspond to three interfaces on the panel, click on that to switch to the current input

Mode switch: switch to another mode currently in use, divided into automatic switching and manual switching.

Channel Close: Close all current input channels

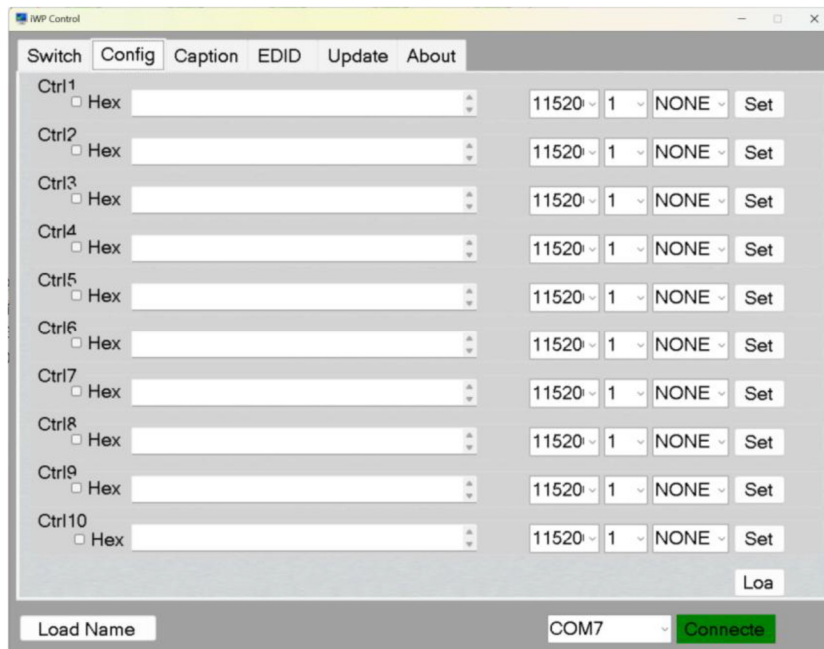


Model : ATZ HDBT-E70-TW-H2UC

Description: HDBaseT™ Sender Wall Plate 2xHDMI+USB-C inputs+IR 4K60 4:2:0 (70m)

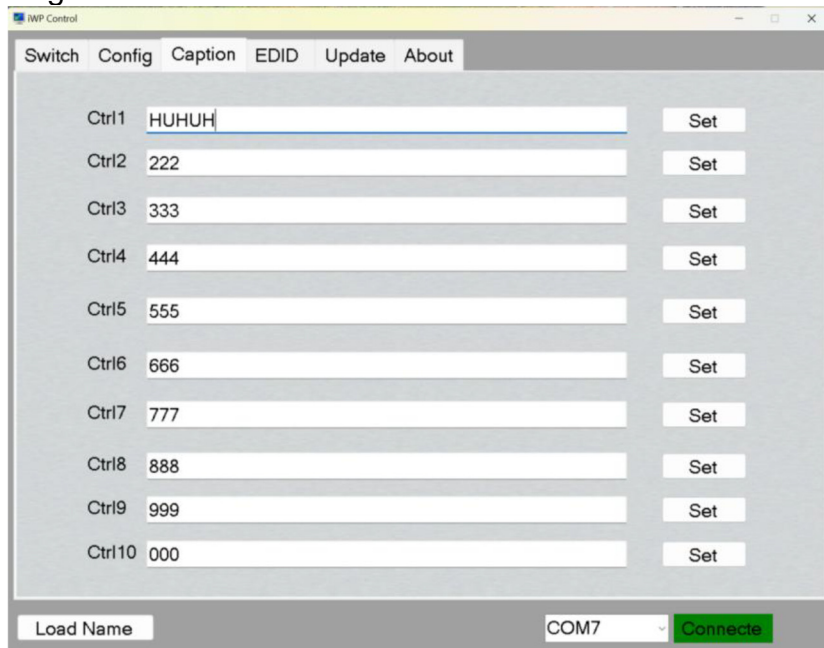
Config setting interface:

The Config setting interface supports filling in 10 commands, corresponding to the 10 keys Ctrl1 to Ctrl10 on the Switch interface. The commands can support ASCII code, HEX code, and the baud rate can be customized.



Caption title interface:

Supports modification of the names of 10 keys from Ctrl1 to Ctrl10, supporting Chinese and English.



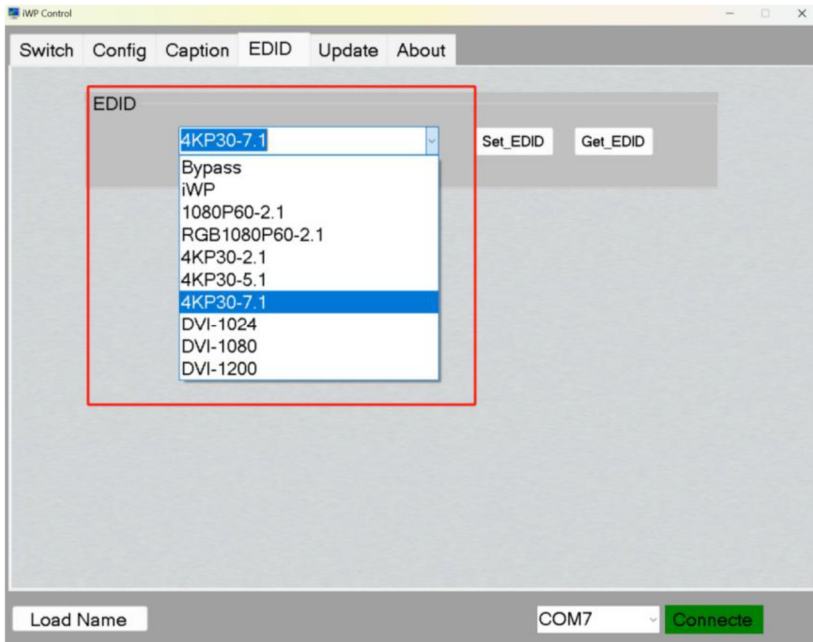
EDID modification interface

Modify the EDID of each channel. After modifying the EDID, you need to unplug and plug the

Model : ATZ HDBT-E70-TW-H2UC

Description: HDBaseT™ Sender Wall Plate 2xHDMI+USB-C inputs+IR 4K60 4:2:0 (70m)

wires.



Update upgrade interface

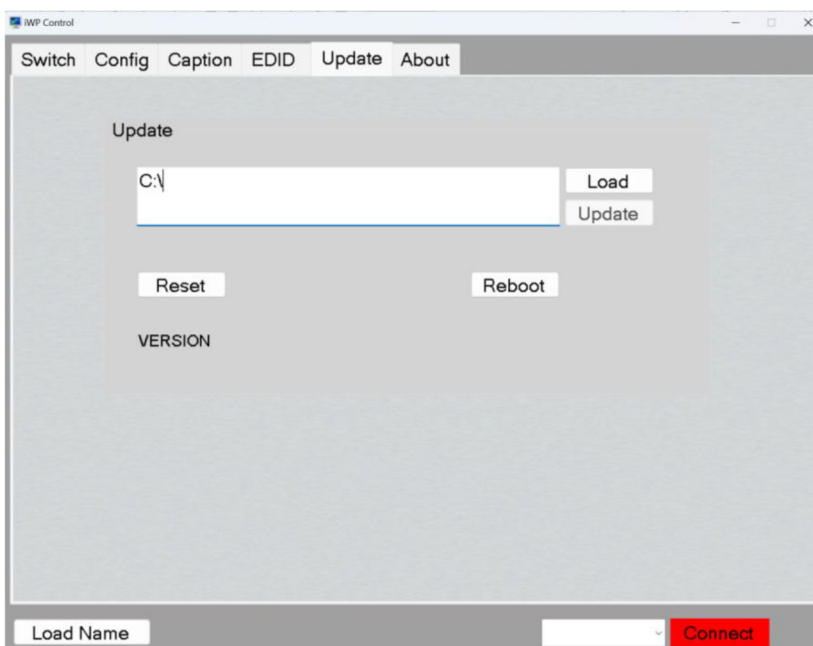
Upgrade mode: Press and hold the HD1 and HD2 buttons at the same time, then power on. When the HD1, USB, and HD2 buttons light up at the same time, it means that you have entered the upgrade mode.

At this time, open the host computer software and enter the Update upgrade interface. Click Load to select the upgrade file, and select the APP.bin file as shown below:

 APP_HTH.bin

2023/12/21 11:40

After selecting the file, click Update. After the upgrade is successful, the HD1, USB, and HD2 buttons will flash quickly, and the system will automatically restart after the flashing is complete.



Model : ATZ HDBT-E70-TW-H2UC

Description: HDBaseT™ Sender Wall Plate 2xHDMI+USB-C inputs+IR 4K60 4:2:0 (70m)

Serial port commands:

RS232 communication protocol and central control command code description:

Use direct connection, RS232 Phoenix terminal definition (from top to bottom): RX GND TX

Communication protocol: (baud rate 115200, data bit 8, stop bit 1, check bit none)

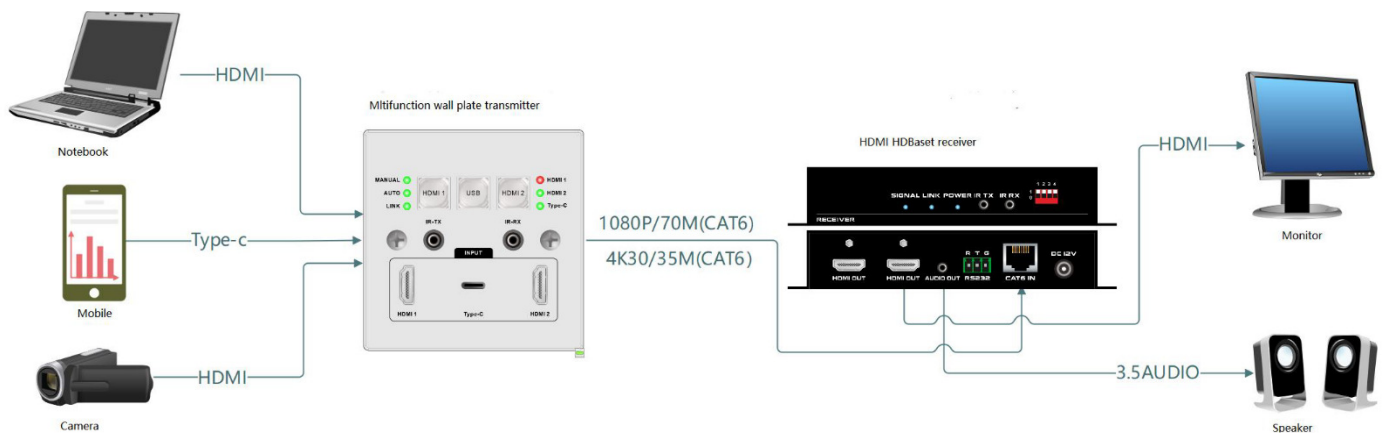
Commands	Functions
HD1.	Switch to HD1 channel
USB.	Switch to USB channel
HD2.	Switch to HD2 channel
CTRL{X}.	Send serial port commands, up to 10
MANUAL.	Switch to manual switching
AUTO.	Switch to automatic switching
CLOSE.	Close the current input channel

Package Contents :

- 1x HDBaseT Transmitter Wall plate
- 1x Power adapter (12V 1.5A)
- 1x IR Blaster cable
- 1x IR Receiver cable
- 1x 3pin Phoenix terminal
- 1x 2pin Phoenix terminal
- 2x cross countersunk screw KM4*20 silver

Product Diagram:

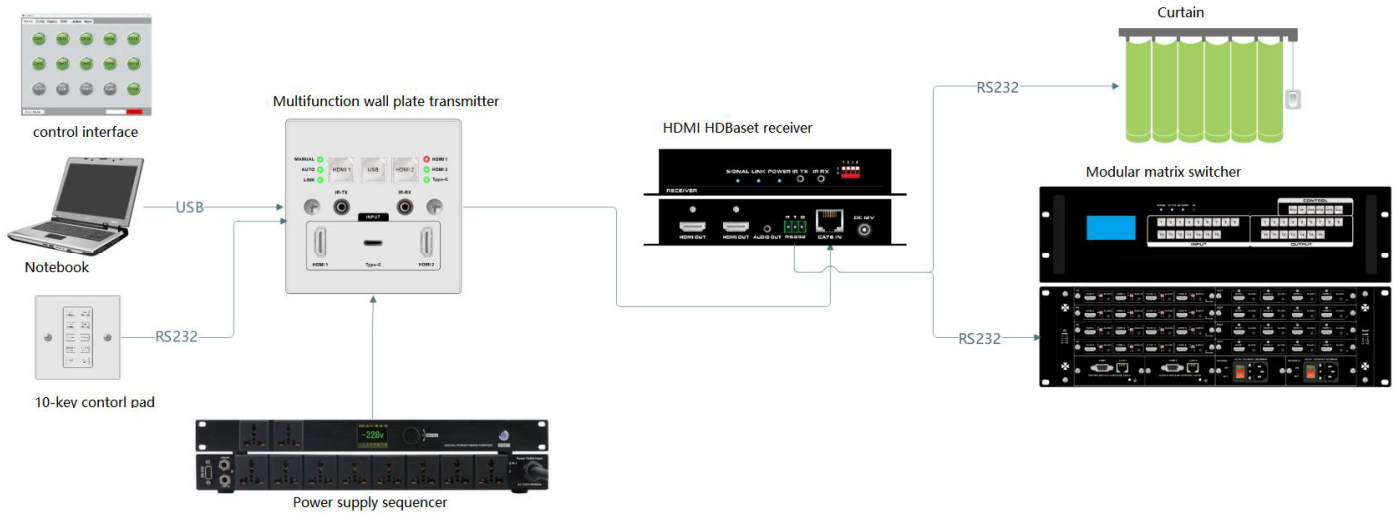
Video connection



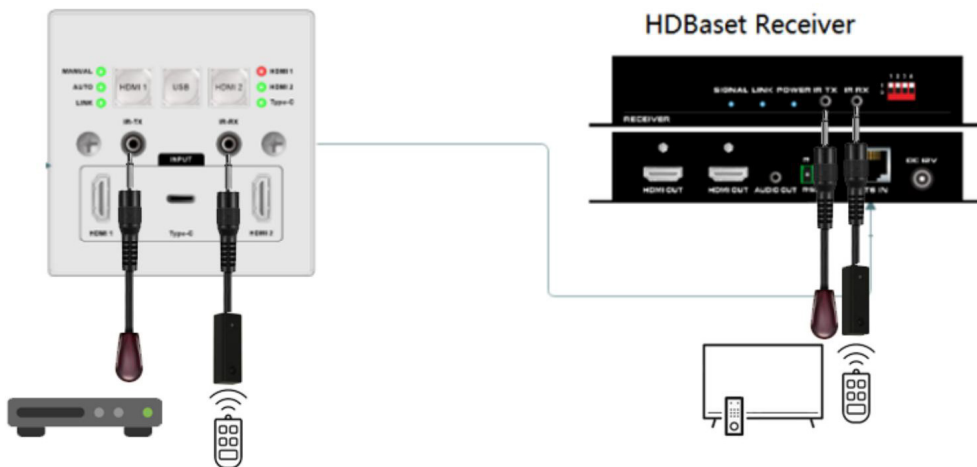
Model : ATZ HDBT-E70-TW-H2UC

Description: HDBaseT™ Sender Wall Plate 2xHDMI+USB-C inputs+IR 4K60 4:2:0 (70m)

RS232 control connection



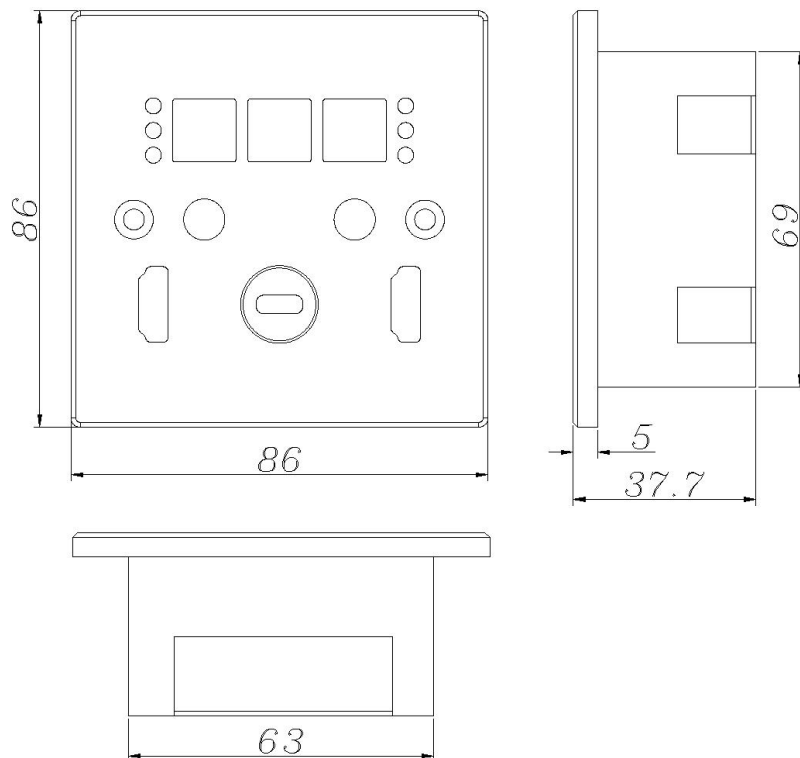
Bi-directional IR connection



Model : ATZ HDBT-E70-TW-H2UC

Description: HDBaseT™ Sender Wall Plate 2xHDMI+USB-C inputs+IR 4K60
4:2:0 (70m)

UK Panel Dimension



Warranty: 2 Years

Warranty is effective from the date of original delivery.

This warranty shall be void if a serial number has been removed from the product.

HDMI

High-Definition Multimedia Interface
The terms HDMI and HDMI High-Definition Multimedia interface, and the HDMI Logo are trademarks or registered trademarks of HDMI Licensing LLC in the United States and other countries