

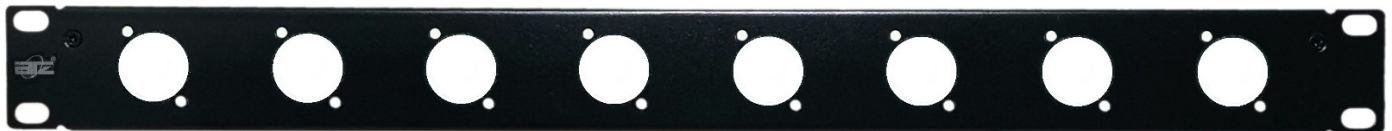
Model : ATZ NET-DT-PP^{xx}
xx = Number of Ports: 4 / 8 / 12 / 16

Description: 19" 1U (4 / 8 / 12 / 16) Ports D-Type blank Patch Panel with Lacer Bar

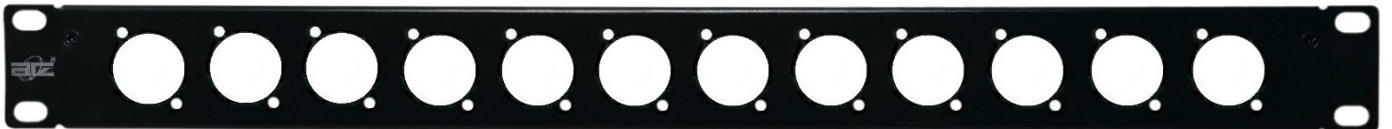
ATZ NET-DT-PP4 – 19" 4 Ports D-Type blank Patch Panel



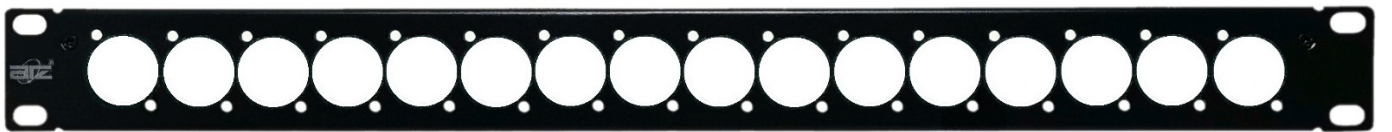
ATZ NET-DT-PP8 – 19" 8 Ports D-Type blank Patch Panel



ATZ NET-DT-PP12 – 19" 12 Ports D-Type blank Patch Panel



ATZ NET-DT-PP16 – 19" 16 Ports D-Type blank Patch Panel



This 19-inch patch panel is designed for standard server racks, it is a device used in telecommunications, computer networks and other communication systems to connect and manage various cables and devices. A patch panel usually consists of a frame and a series of slots in which are installed modular receptacles for connecting various cables and devices. The main function of the distribution frame is to provide a centralized, manageable and scalable connection point for the transmission of data and signals in the communication system.

Model : ATZ NET-DT-PP^{xx}
xx = Number of Ports: 4 / 8 / 12 / 16

Description: 19" 1U (4 / 8 / 12 / 16) Ports D-Type blank Patch Panel with Lacer Bar

Feature & Specification:

Ports number	4 Ports / 8 Ports / 12 Ports / 16 Ports
Material	Cold-rolled steel
Colour	Matte black
Dimensions	483*44mm
Installation	Screw fixation, easy to install
Application	19-inch standard server rack
Key feature	It supports flexible configuration with various D-type module bases to meet your specific needs

Eg of D-Type Module. (Not Included)



Model : ATZ NET-DT-PP^{xx}
xx = Number of Ports: 4 / 8 / 12 / 16

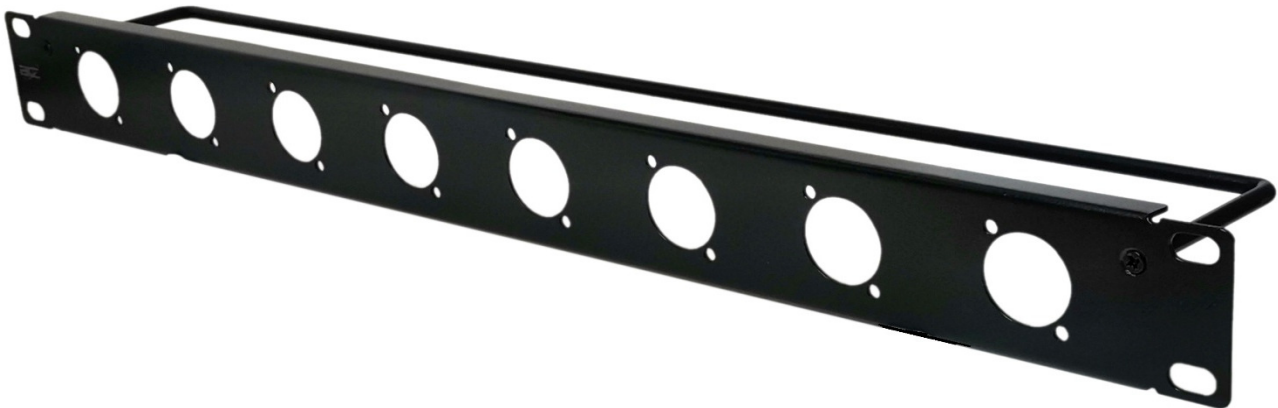
Description: 19" 1U (4 / 8 / 12 / 16) Ports D-Type blank Patch Panel with Lacer Bar

Product Picture:

Side View – 19" 4 Ports D-Type blank Patch Panel



Side View – 19" 8 Ports D-Type blank Patch Panel



Side View – 19" 12 Ports D-Type blank Patch Panel



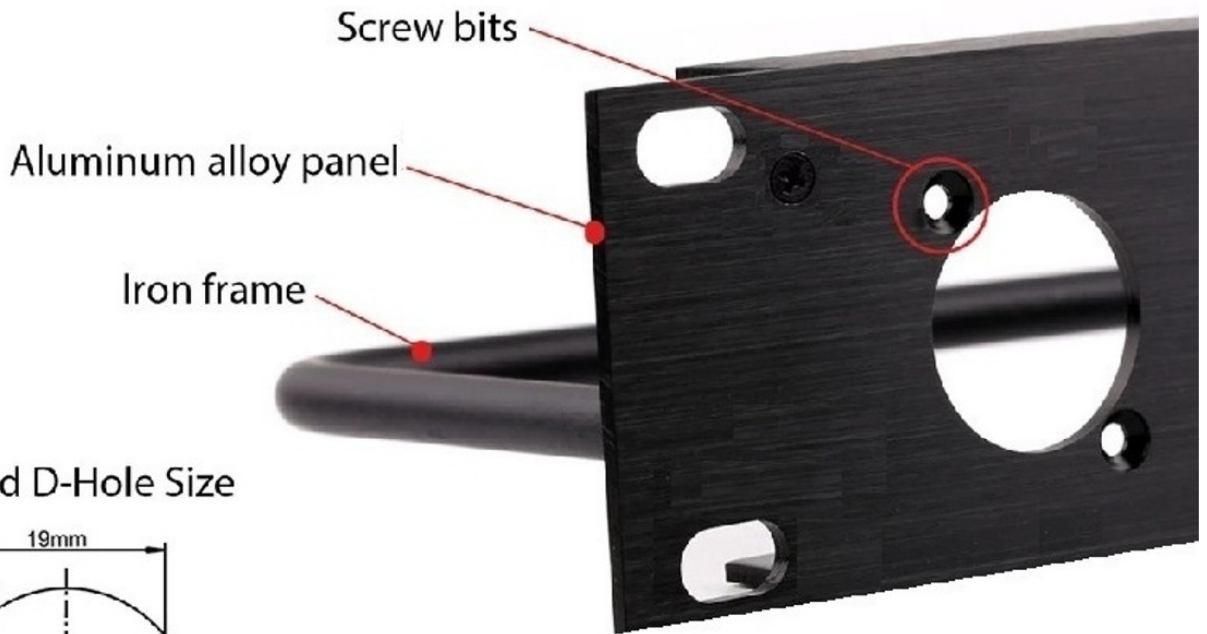
Model : ATZ NET-DT-PP xx
 xx = Number of Ports: 4 / 8 / 12 / 16

Description: 19" 1U (4 / 8 / 12 / 16) Ports D-Type blank Patch Panel with Lacer Bar

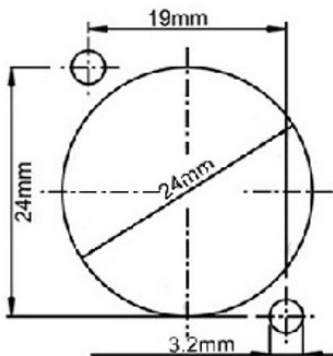
Side View – 19" 16 Ports D-Type blank Patch Panel



Product Diagram:



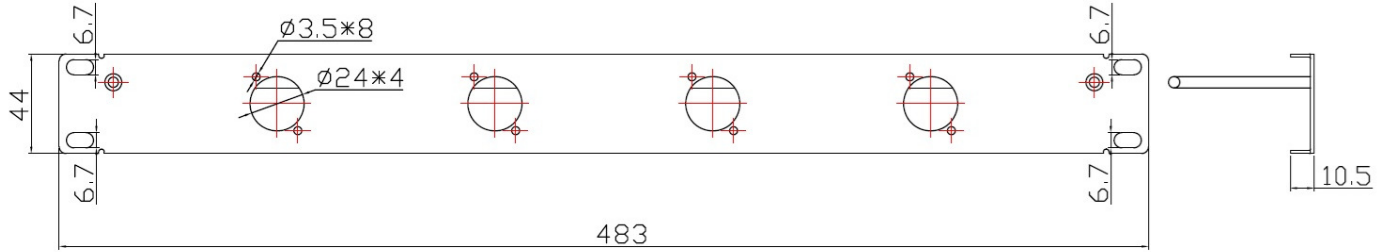
Standard D-Hole Size



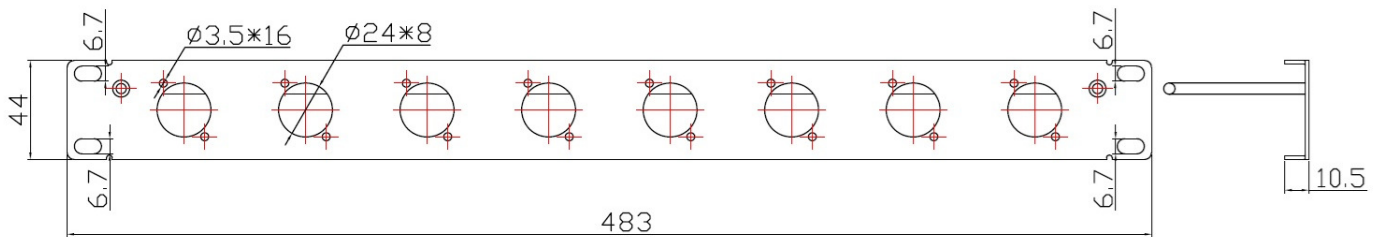
Model : ATZ NET-DT-PP xx
 xx = Number of Ports: 4 / 8 / 12 / 16

Description: 19" 1U (4 / 8 / 12 / 16) Ports D-Type blank Patch Panel with Lacer Bar

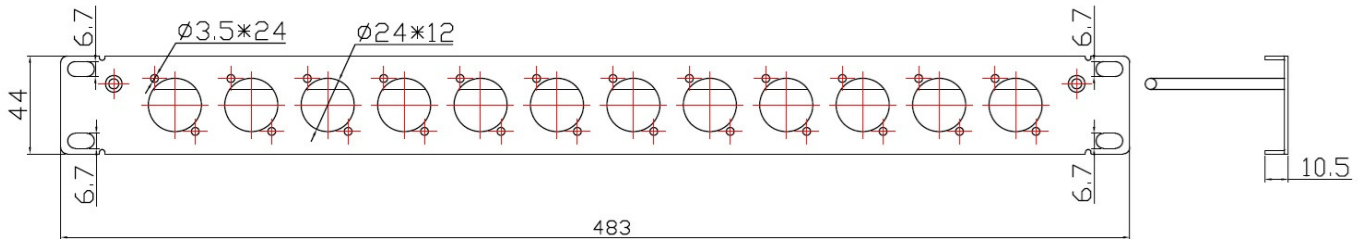
ATZ NET-DT-PP4



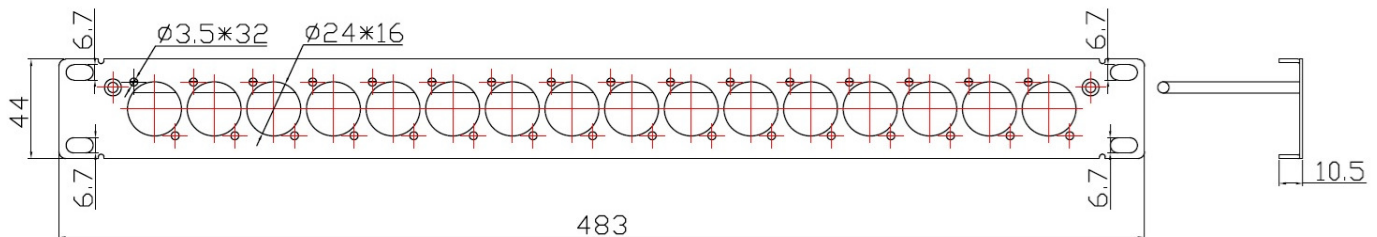
ATZ NET-DT-PP8



ATZ NET-DT-PP12



ATZ NET-DT-PP16



Model : ATZ NET-DT-PP^{xx}
^{xx} = Number of Ports: 4 / 8 / 12 / 16

Description: 19" 1U (4 / 8 / 12 / 16) Ports D-Type blank Patch Panel with Lacer Bar

Application Diagram:



Model : ATZ NET-DT-PP^{xx}
xx = Number of Ports: 4 / 8 / 12 / 16

Description: 19" 1U (4 / 8 / 12 / 16) Ports D-Type blank Patch Panel with Lacer Bar

Products Applications

Suitable for rack-mounted equipment, IT equipment, rack-mounted servers, network cabinets, large concerts and other places.



Package Contents:

1 x ATZ 19" 1U (4 / 8 / 12 / 16) Ports D-Type blank Patch Panel with Lacer Bar